



# The Happy <sup>IR</sup> Range

[www.mr-resistor.co.uk](http://www.mr-resistor.co.uk)  
[info.mr-resistor.co.uk](mailto:info.mr-resistor.co.uk)

Tel: 020 8874 2234  
Fax: 020 8871 2262

Sales, Offices, Warehouse & Showroom  
21 Lydden Road, London, SW18 4LT

Showroom & Sales  
82-84 New Kings Road, London, SW6 4LU



Index



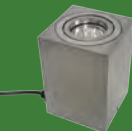
**Colour Changing Lamps & Remote** are used within many of our colour changing products, but can also be used directly within your own application or project. 3 - 6



**Colour Changing Downlights** are to set the perfect mood with your choice of colour. These downlights will complement existing lighting or can be used as the sole light source in your room. 7 - 10



**Wall Lights** create dramatic columns of light either upwards, downwards or in both directions. Ideal for lighting the side of buildings or for highlighting features within the home. 11 - 12



**Table & Ceiling Lights** are used to create moods within a room or highlight elements within a room with colour. Choose from preset colours or colour cycle. 13 - 16



**Track** lends itself to flexible, easy to instal designs. The fittings can be re-positioned easily and can be used to provide a variety of lighting effects. 17 - 18



**Outdoor Lights** provide direct illumination of objects to create dramatic effect lighting in any outdoor garden. 19 - 20



**Tape Light** can be used around coving or under cupboards to create wonderful lighting effects. It can also be built into cupboards, cabinets and shelves for interesting displays. 21 - 28

Transformer

LED Driver

The LED driver is the only driver that will work with the colour changing Happy Range. This driver is small enough to go through the cut out of a ceiling before a downlighter. The LEDs must be wired in parallel when using this driver. This driver is not dimmable. It can only be switched.

Lamps

Happy Retro Fit Lamps

These Retro fitting LED Colour Changing Lamps are able to be fitted instead of a halogen dichroic lamp. This means that it is possible to fit it in most 50mm low voltage light fittings.

The colour changing is operated by an IR remote powered by 2 x AAA batteries. This means that the remote must be pointed at the lamp itself in order for colour changing to work.

LED Driver White 10W 12V  
PART No: CCRGB DRIVER



Construction	Plastic
Output Wattage	10W
Height	19mm
Width	75mm
Depth	36mm
Maximum LED's	2
Voltage	12VDC
Type Of Transformer	Electronic
Wiring type	Parallel

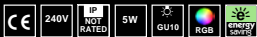
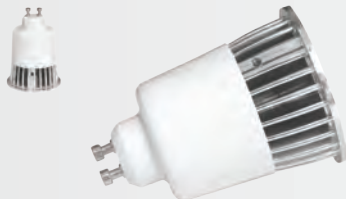
Happy Lamp E27 5W 240V  
PART No: CCRGB LAMP E27



Construction	Metal/Plastic
Lampholder	E27
Wattage	5W
Diameter	50mm
Length	100mm
Voltage	240V
IP Rating	IP00



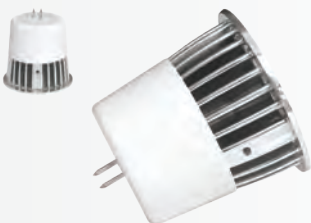
Happy Lamp GU10 5W 240V  
PART No: CCRGB LAMP GU10



Construction	Metal/Plastic
Lampholder	GU10
Wattage	5W
Diameter	50mm
Length	70mm
Voltage	240V
IP Rating	IP00



Happy Lamp MR16 5W 12V  
PART No: CCRGB LAMP GX5.3



Construction	Metal/Plastic
Lampholder	GU5.3
Wattage	5W
Diameter	50mm
Length	52mm
Voltage	12VDC
IP Rating	IP00



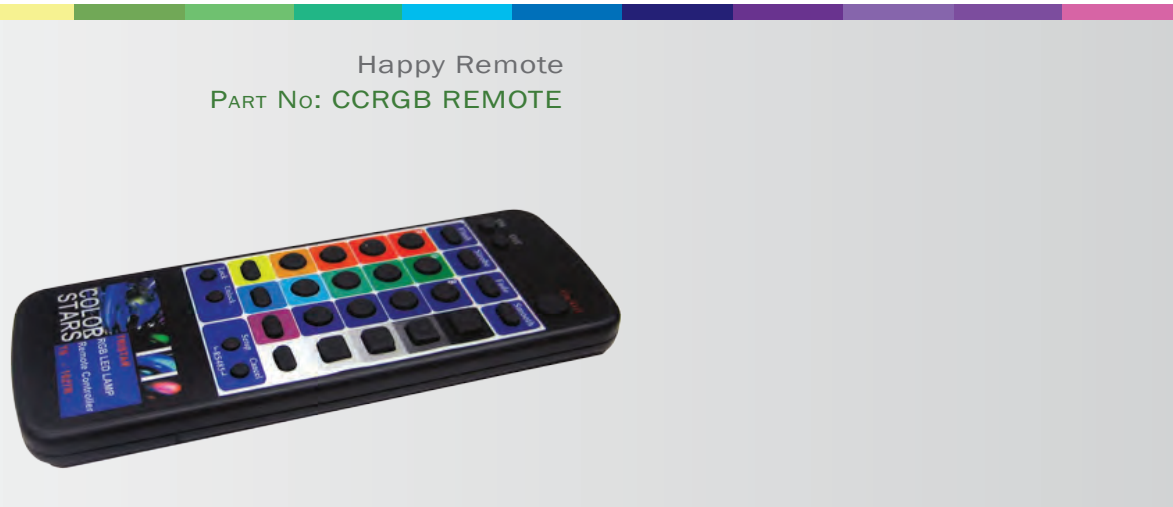


Remote

Happy Remote

The colour changing is operated by an IR remote, which is powered by 2 x AAA batteries. This means that the remote must be pointed at the lamp itself in order for colour changing to work. There are 16 different colours available, including white, each with four different levels of brightness. There are also four colour changing programs available, Flashing (fast flashing colour changing), Strobe (slow strobe colour changing), Fade (fast fading colour changing) and Smooth (slow smooth colour changing).

The Happy remote can be used with any product in the Happy IR Range except for the RGB Tape, which has its own dedicated remote. Only 1 remote is required perhouse hold, since a single unit can control any product containing the special Happy Lamp.

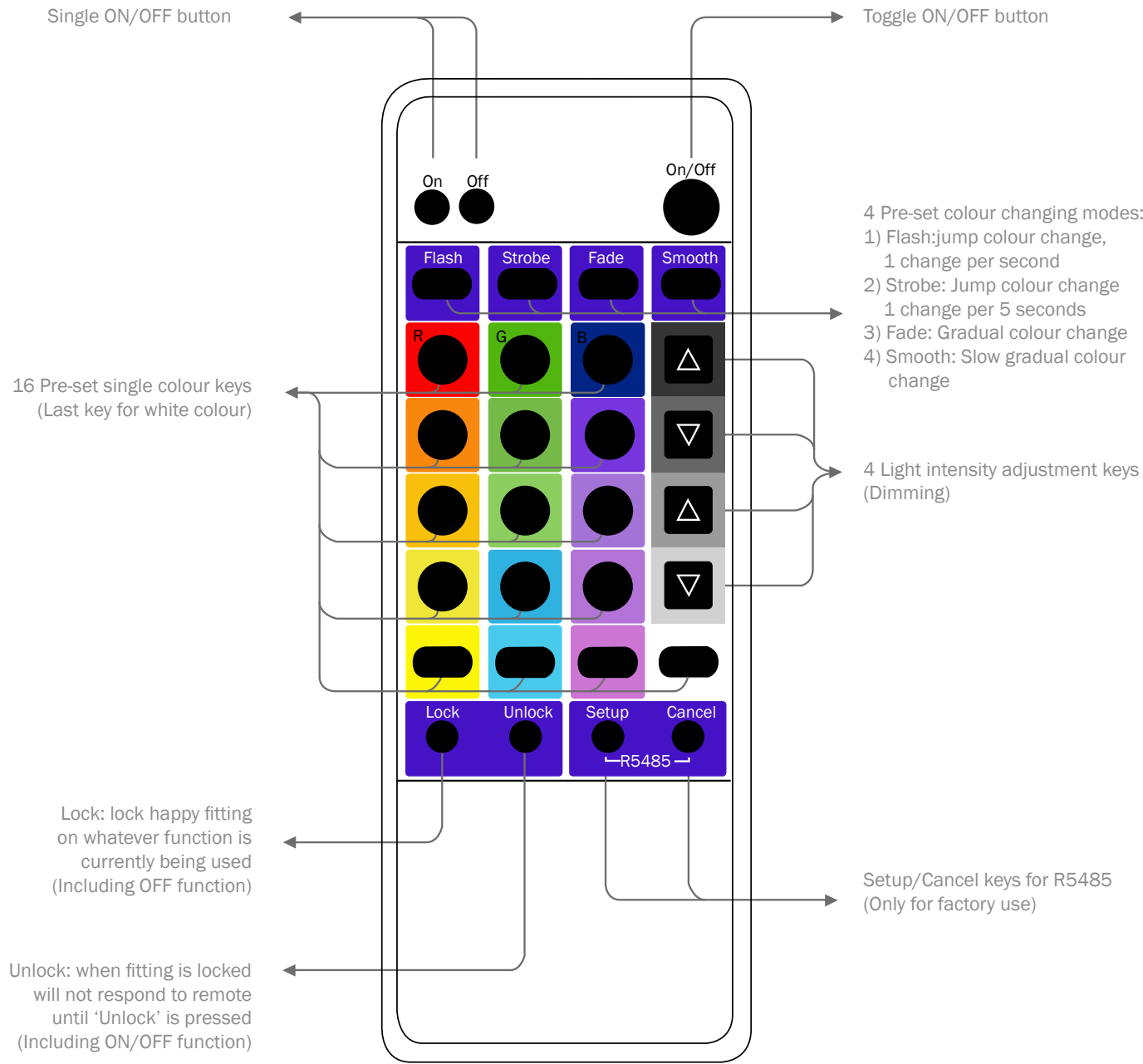


Happy Remote  
PART No: CCRGB REMOTE



Construction Plastic  
Length 160 mm  
Width 60 mm  
Depth 15 mm

Happy Remote Instruction



## Downlights

### Happy Downlight Kit

The Happy Downlight is an adjustable recessed light fitting available in a Nickel and a White finish. Included with this fitting is a 5W GX5.3 colour changing retro fit lamp and a 10W / 12V transformer.

This fitting is ideal for all areas of the home.

A remote control would need to be purchased with this product in order to change the colours and setting.

Happy Downlight 5W 12V Nickel

PART No: HAPPY D/L NICKEL



Happy Downlight 5W 12V White

PART No: HAPPY D/L WHITE



Construction	Die-Cast Aluminium
Lampholder	GU5.3
Wattage	5W
Cut-Out	80mm
Depth	68mm
Diameter	90mm
Rotation	360°
Vertical Tilt	35°
Voltage	12V
IP Rating	IP20



Driver Included  
See page 5 for remote control

[www.mr-resistor.co.uk](http://www.mr-resistor.co.uk)



[www.mr-resistor.co.uk](http://www.mr-resistor.co.uk)



Downlights

Happy Shower Kit

The Happy Shower is a fixed, recessed downlight available in Chrome, Nickel and a White finish with a frosted glass lens. Included with a fitting is a 5W GX5.3 colour changing retro fit lamp and a 10W / 12V transformer.

This fitting is ideally for bathrooms and shower rooms with a zone 1 or 2 regulation.

A remote control would need to be purchased with this product in order to change the colours and settings.

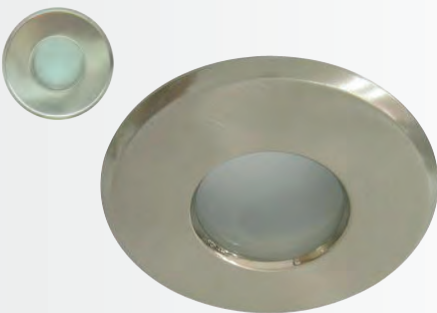
Happy Shower 5W 12V White  
PART No: HAPPY SHOWER WHT



Happy Shower 5W 12V Chrome  
PART No: HAPPY SHOWER CHR



Happy Shower 5W 12V Nickel  
PART No: HAPPY SHOWER NKL



Construction	Die-Cast Aluminium
Lampholder	GU5.3
Wattage	5W
Cut-Out	72mm
Depth	100mm
Diameter	85mm
Voltage	12V
IP Rating	IP65



Driver Included  
See page 5 for remote control

Wall Lights

Happy Pillar Box Single

The Happy Pillar Box Single, is a square wall mounted light fitting containing a GU10, colour changing, retro fit lamp. Rated IP65, the pillar light can be left outside or positioned into bathrooms to create an urban feeling. The Happy Pillar Box Single can be positioned to point upwards, downwards or even sideways.

This fitting can take a 50W GU10 halogen lamp to transform the mood from colourful to standard warm white.

A remote control would need to be purchased with this product in order to change the colour settings.

HAPPY PILLAR BOX SINGLE STAINLESS STEEL  
PART No: HAPPY PILLAR SS

HAPPY PILLAR BOX SINGLE WHITE  
PART No: HAPPY PILLAR WH

HAPPY PILLAR BOX SINGLE BLACK  
PART No: HAPPY PILLAR BK



Construction Steel  
Lampholder GU10  
Wattage 5W  
Height 103mm  
Depth 103mm  
Width 63mm  
Voltage 240V  
IP Rating IP65



Integral Driver  
See page 5 for remote control

Wall Lights

Happy Pillar Box Double

The Happy Pillar Box Double is a square, wall mounted light fitting containing 2 GU10, colour changing, retro fit lamp. Rated IP65, the pillar light is ideal for framing doorways by positioning 1 fitting either side of the door frame. You will need to place the Pillar Box at eye level to make it easier to replace the lamp that will be facing up to the ceiling.

This fitting can take 2 x 35W GU10 halogen lamp to transform the mood from colourful to standard warm white.

A remote control will need to be purchased with this product in order to change the colour settings.

HAPPY PILLAR BOX DOUBLE STAINLESS STEEL  
PART No: HAPPY PILLAR 2 SS

HAPPY PILLAR BOX DOUBLE WHITE  
PART No: HAPPY PILLAR 2 WH

HAPPY PILLAR BOX DOUBLE BLACK  
PART No: HAPPY PILLAR 2 BK

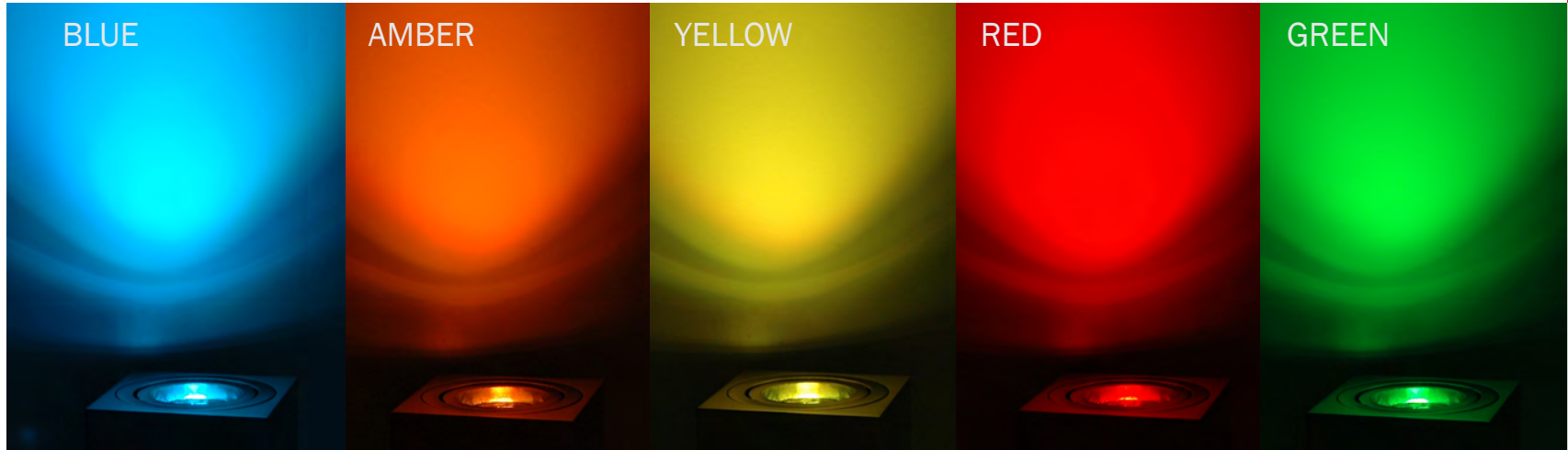


Construction Steel  
Lampholder GU10  
Wattage 2 x 5W  
Height 196mm  
Depth 102mm  
Width 63mm  
Voltage 240V  
IP Rating IP65



Integral Driver  
See page 5 for remote control





Ceiling & Table

Happy Table

The Happy Table can give you instant colour change in any room. It stands upright and simply plugs into any 13A socket. The 5W LED can produce bright colours to change the colour of your room. The top of the Happy Table can tilt 20° in any direction.

The Happy Table is controlled with the required remote control. Simply point the remote at the light and choose from 16 colours including white. You can select 4 colour scroll modes. These are fast and slow colour stepping and fast and slow smooth colour scroll. Using the remote you can select four different dimming levels and turn the unit on and off. The Happy Table can be used as a night light. It doesn't get hot, it stays cool to touch. It only uses 5 watts mean its costs effective.

A remote control would need to be purchased with this product in order to change the colour settings.



Construction	Aluminium
Lampholder	GU10
Wattage	5W
Height	110mm
Depth	78mm
Width	78mm
Voltage	240V
IP Rating	IP00
Cable Length	3 Metres



Integral Driver  
See page 5 for remote control



Ceiling & Table

Rock Cube

The Happy Rock Cube Surface Downlighter is a surface mounted light. It is ideal for situations where you have a concrete ceiling or cannot cut into the ceiling due to fire regulations. It is mains 240V fitting and takes a GU10 lamp.

The Happy Rock Cube is controlled with the required remote control. Simply point the remote at the light and choose from 16 colours including white. You can select 4 colour scroll modes. These are fast and slow colour stepping and fast and slow smooth colour scroll. Using the remote you can select four different dimming levels and turn the unit on and off. The Happy Rock Cube doesn't get hot and only uses 5 watts which means it's cost effective.

A remote control would need to be purchased with this product in order to change the colour settings.

Rock Cube Surface Nickel  
PART No: HAPPY ROCK CUBE NKL



Rock Cube Surface White  
PART No: HAPPY ROCK CUBE WHT



Construction Aluminium  
Lampholder GU10  
Wattage 5W  
Height 110mm  
Depth 78mm  
Width 78mm  
Voltage 240V  
IP Rating IP00  
Cable Length 3 Metres



Integral Driver  
See page 5 for remote control

Track

Happy Track

The Happy Track is a retro fit, colour changing spotlight for use with European 240V, single circuit track. It is the easiest way to achieve colour changing track lighting.

The MR16 fitting has a intergral driver in the base to allow for easy installation. The Happy Track, which is available in Black and White, is ideal for small shops.

A remote control would need to be purchased with this product in order to change the colour settings.



Happy Track White 5W  
PART No: HAPPY TRACK LED1

Happy Track Black 5W  
PART No: HAPPY TRACK LED4

Happy Bullet White 5W  
PART No: HAPPY BULLET WH



Construction Aluminium  
Lampholder GU5.3  
Wattage 5W  
Height 160mm  
Width 145mm  
Depth 55mm  
Voltage 240V  
IP Rating IP00



Construction Aluminium  
Lampholder E27  
Wattage 5W  
Height 175mm  
Width 135mm  
Depth 80mm  
Voltage 240V  
IP Rating IP00



Integral Driver  
See page 5 for remote control

Track

Track Accessories

The Happy Track fitting can be mixed with regular halogen fittings in order to create different moods and light levels within a room. The track is available in Black and White with all connectors and other accessories available in the same colours to keep a uniformed style.



PART No:	
TK1000 White	1m
TK2000 White	2m
TK1000 Black	1m
TK2000 Black	2m

PART No:	
2011303 White	
2011835 Black	

PART No:	
2036027 White	
2011295 Black	

PART No:	
L 2011379 White	
L 2011297 Black	
X 2011383 White	
X 2011301 Black	
T 2011381 White	
T 2011299 Black	

**The Track**  
is the most important part of the Happy Track System. Each piece of track is available in Black and White and in 1m and 2m lengths. They have a live end, fixing clips and an end cap included but can be connected to other pieces of track.

**The Plug in Couplers**  
join together 2 seperate pieces of track in a straight line. Connects both electonically and mechanically.

**The Flexible Coupler**  
is ideal for when track needs to be connected to other peices of track at an angle which is not 90° or directly straight ahead.

**L Coupler**  
is used for connecting 2 separate pieces of track at an angle of 90°.

**X Coupler**  
is used for connecting 4 separate pieces of track at an angle of 90° between each. It is usually used in the center of a room.

**T Coupler**  
is used for connecting 3 separate pieces of track at an angle of 90°.



Spike

Happy Spike

The Happy Spike is an adjustable spotlight that can be positioned in the ground, such as lawns or flower beds, to offer colour changing outdoor lighting. Available in 3 different finishes, black, copper and stainless steel, the happy spike is the easiest way to achieve colour changing without any effort.

A remote control would need to be purchased with this product in order to change the colour settings.

HAPPY SPIKE COPPER  
PART No: HAPPY SPIKE COP



HAPPY SPIKE STAINLESS STEEL  
PART No: HAPPY SPIKE SS



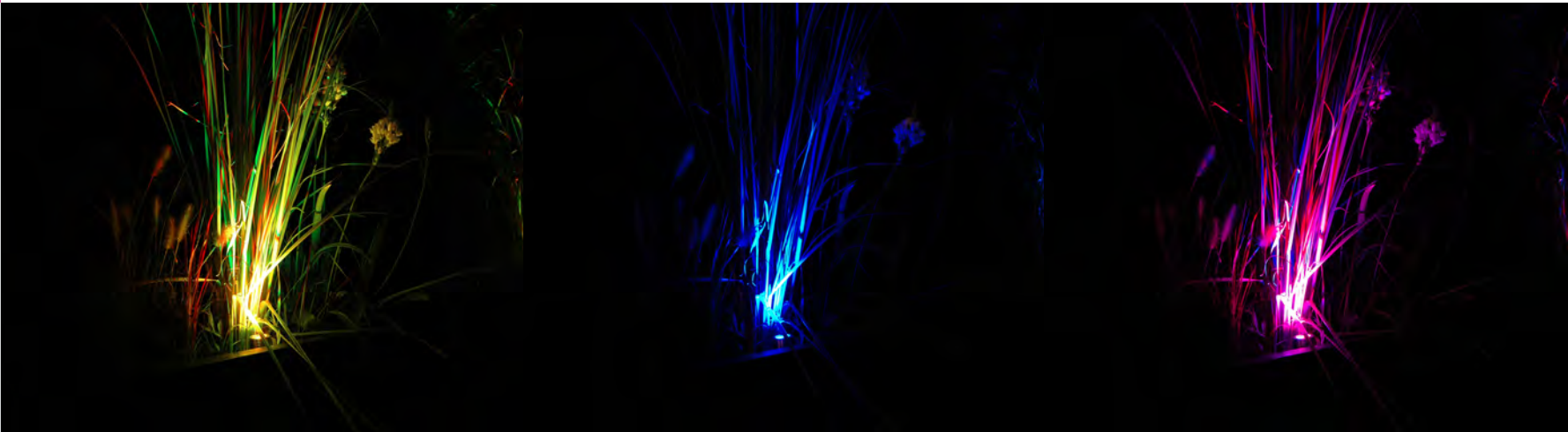
HAPPY SPIKE BLACK  
PART No: HAPPY SPIKE BL



Construction Steel  
Lampholder GU10  
Wattage 5W  
Diameter 62mm  
Height 105mm  
Length 140mm  
Voltage 240V  
IP Rating IP65



Integral Driver  
See page 5 for remote control



## Tape

### Tape RGB

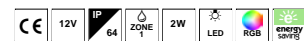
The Happy Tape RGB light is a flexible light source to illuminate under cupboards, cabinets and shelves; anywhere that does not have much available space.

Popular amongst residential and commercial applications alike, this 12V colour changing strip is the perfect solution to mood lighting problems in clubs, shops, pubs, restaurants and bars. Due to the tape light's flexibility, it is also the perfect light solution to create a uniformed, even light around curved surfaces, such as columns. Every tape is 300mm, which must be connected via pins. Up to 12 strips can work simultaneously, with the tape itself being able to cut every 75mm. Once cut it cannot be rejoined or extended, even though the tape is flexible, there is still a strong possibility of over bending it and damaging the product.

To achieve IP64 the tape must be sealed using heat shrink sleeving on the joints.



Tape RGB 300mm 2W IP64  
PART No: TAPE RGB



Construction	Plastic
Length	300mm
Width	10mm
Height	3mm
Voltage	12V
IP Rating	IP64
Wattage	2W / 300mm
Cut Length	75mm
LED Life	5000 Hours

Parallel Wiring  
See page 25 for remote control

[www.mr-resistor.co.uk](http://www.mr-resistor.co.uk)



[www.mr-resistor.co.uk](http://www.mr-resistor.co.uk)



Tape

Tape Accessories

PART No: TAPE RGB REMOTE



The RGB Remote Control is specifically designed for use with the LED RGB Tape. The light works through infrared with a 16 colours to suit any needs.

Construction	Plastic
Length	7 mm
Width	54 mm
Height	86 mm
Voltage	3V

PART No: TAPE RGB IR



The IR Receiver Control Box is connected into the RGB Tape using a series of plug and play connections. The controller will run up to 12 strips at a time. You will need to place the IR Eye in a visible location.

Construction	Plastic
Length	25 mm
Width	45 mm
Height	70 mm
Voltage	12V
Lead Length (in)	200 mm

PART No: TAPE RGB 2A CONT



The RGB 2A Controller automatically changes when switched on. Then, by touching the button, the colours will keep to one specific colour of your choice. The RGB 2A Controller uses a series of plug and play connections.

Construction	Plastic
Length	22 mm
Width	35 mm
Height	50 mm
Voltage	12VDC
Lead Length (in)	630 mm
Lead Length (out)	610 mm

PART No: TAPE DRIVER 24W



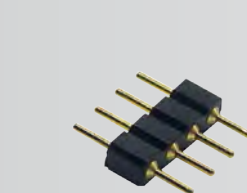
The 12V Tape Driver is a plug and play power supply which has a maximum load of 24W, which is designed to power up to 12 of the 300mm strips simultaneously.

Construction	Plastic
Length	95 mm
Width	45 mm
Height	30 mm
Voltage	12VDC
Maximum Load	24 W
Lead Length (in)	310 mm
Lead Length (out)	340 mm

Tape

Tape Accessories

PART No: TAPE SFS30CC



The RGB Connecting Pins are essential items and will need to be used everytime you wish to connect the RGB Tape, IR Receiver or anymore strips that might be needed.

Construction	Metal
Length	10 mm
Width	10 mm
Voltage	12V

PART No: TAPE RGB AMP



The RGB Amplifier is connected to the tape driver using a series of plug and play connections. This 12V amplifier is used as an extension to connect another 12 RGB strips. It requires its own driver.

Construction	Plastic
Length	70 mm
Width	45 mm
Height	25 mm
Voltage	12V
Head Length (in)	215 mm
Head Length (out)	215 mm

PART No: TAPE RGB 15cm/40cm /100cm



The 15cm, 40cm and 100cm coupler leads are required in order to attach 2 strips together while leaving a gap in-between them.

Construction	Plastic
Length 15cm	150 mm
Length 40cm	400 mm
Length 100cm	1000 mm
Voltage	12V

PART No: SFS30CM RGB



The RGB Power Lead This is a optional item for non plug and play drivers.

Construction	Plastic
Length	500 mm
Voltage	12V

See page 27 - 28 for wiring diagrams

See page 27 - 28 for wiring diagrams

Remote

Tape Remote

The colour changing is operated by an IR remote which is powered by a CR2025 3V battery. This means that the remote must be pointed at the lamp itself in order for the colour changing to work. There are 16 different colours available, including white, each with two different levels of brightness. There are also four colour changing programs available, Flashing (fast flashing colour changing), Strobe (slow strobe colour changing), Fade (fast fading colour changing) and Smooth (slow smooth colour changing).

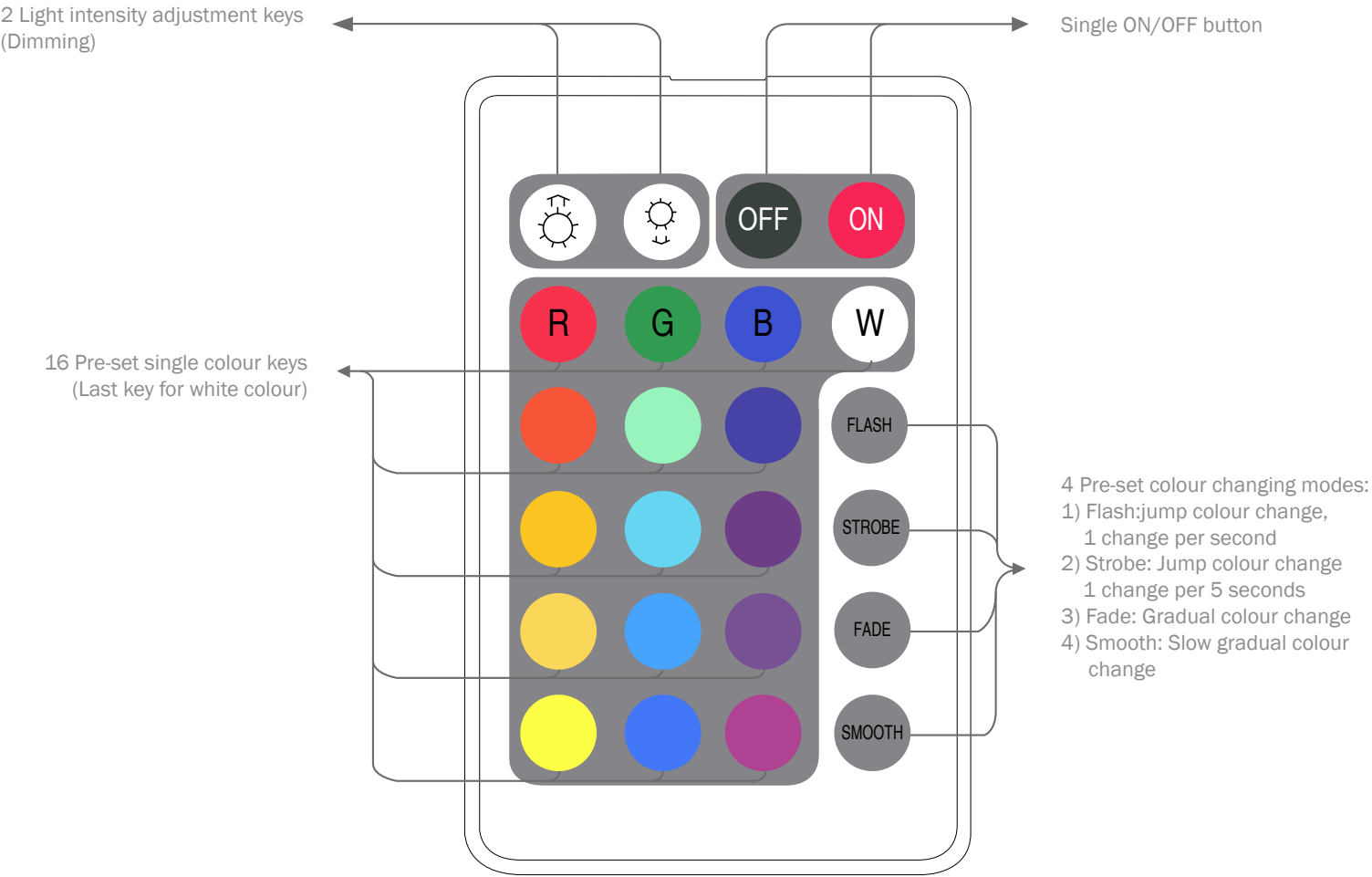
The light works through infrared and can only work with the IR Receiver.



Construction	Plastic
Length	7 mm
Width	54 mm
Height	86 mm
Voltage	3 V

Remote

Tape Remote Instruction



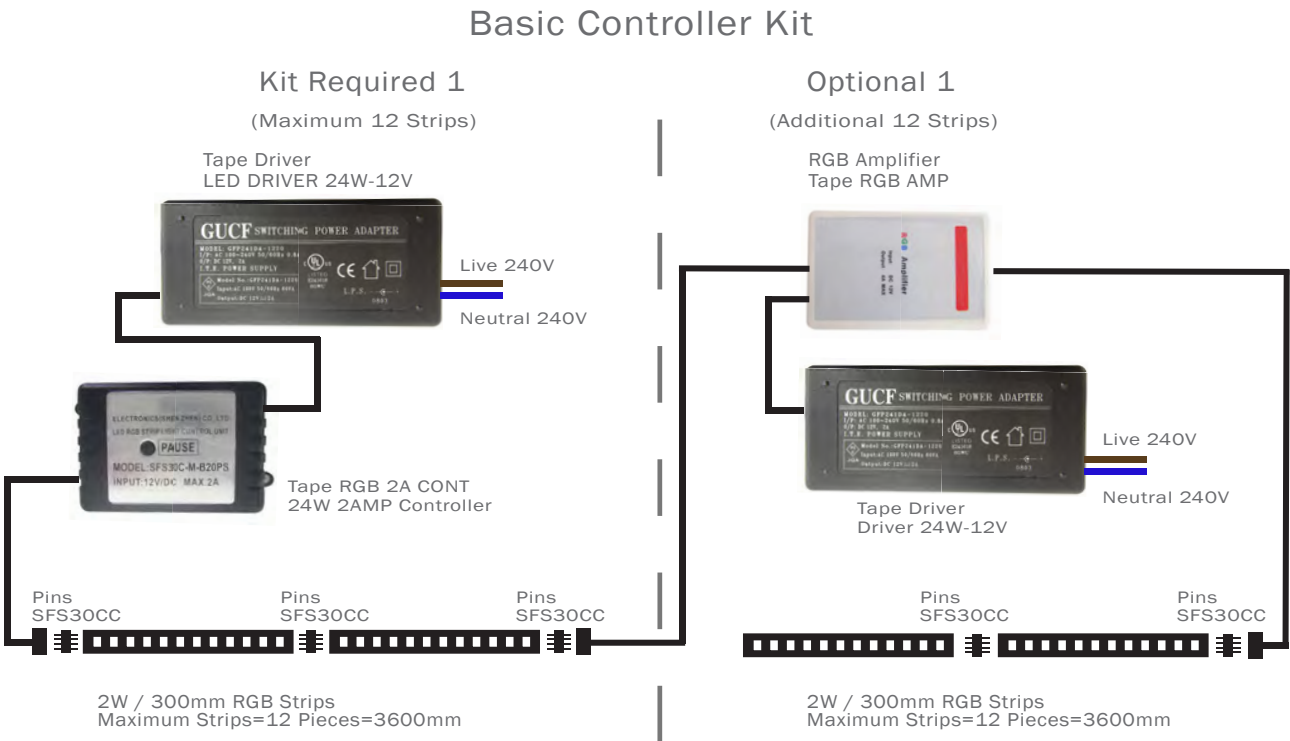


Tape

RGB Tape Push Button Wiring Information

The RGB Tape can be wired with a push button controller. This means the tape will change colour constantly until the push button is pressed. When the button is pressed the LED Tape will pause on whatever colour it is currently on. The below diagram shows how the system should be wired up. Up to 12 strips can work simultaneously with additional 12 strips with an amplifier to continue the circuit.

Please note that a tape driver power supply must be purchased with every controller/ amplifier used.



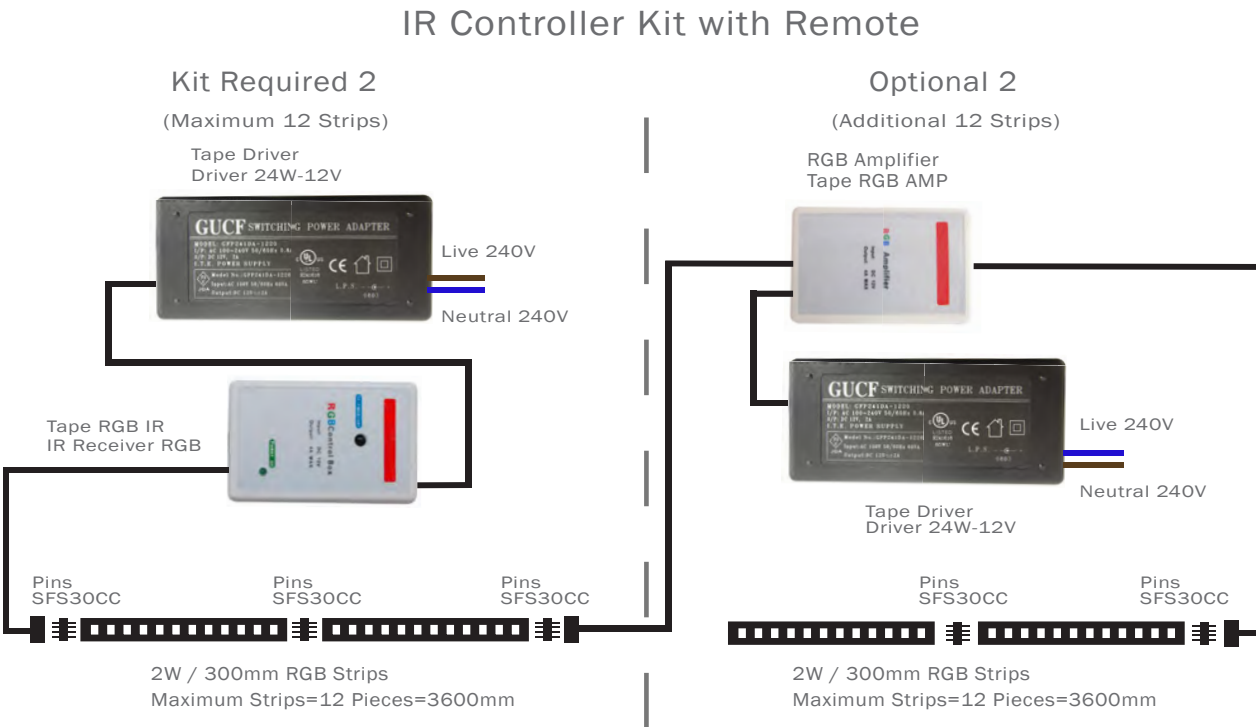
If you were to add 12 more strips to the already existing 12 strips you need an amplifier and another tape driver to carry on with both kits. The MAXIMUM number of RGB strips is 24.

Tape

RGB Tape Infrared Wiring Information

The RGB Tape has the option of being controlled by remote via an IR Receiver. The below diagram shows how the system should be wired up when less than 12 strips are being used. The right side diagram is for when more than 12 but less than 24 strips are to be used.

Please note that a tape driver power supply must be purchased with every controller/ amplifier used.



Additional Tape RGB Remote will be needed for this kit. The RGB remote control is specifically designed for the use of the RGB Tape. The light works through infrared, with a 16 colour changes to suit any needs. The RGB remote can only work with the IR Receiver. The MAXIMUM number of strips is 24.



Tape RGB Remote - LED Keypad RGB

See page 25 for remote control

