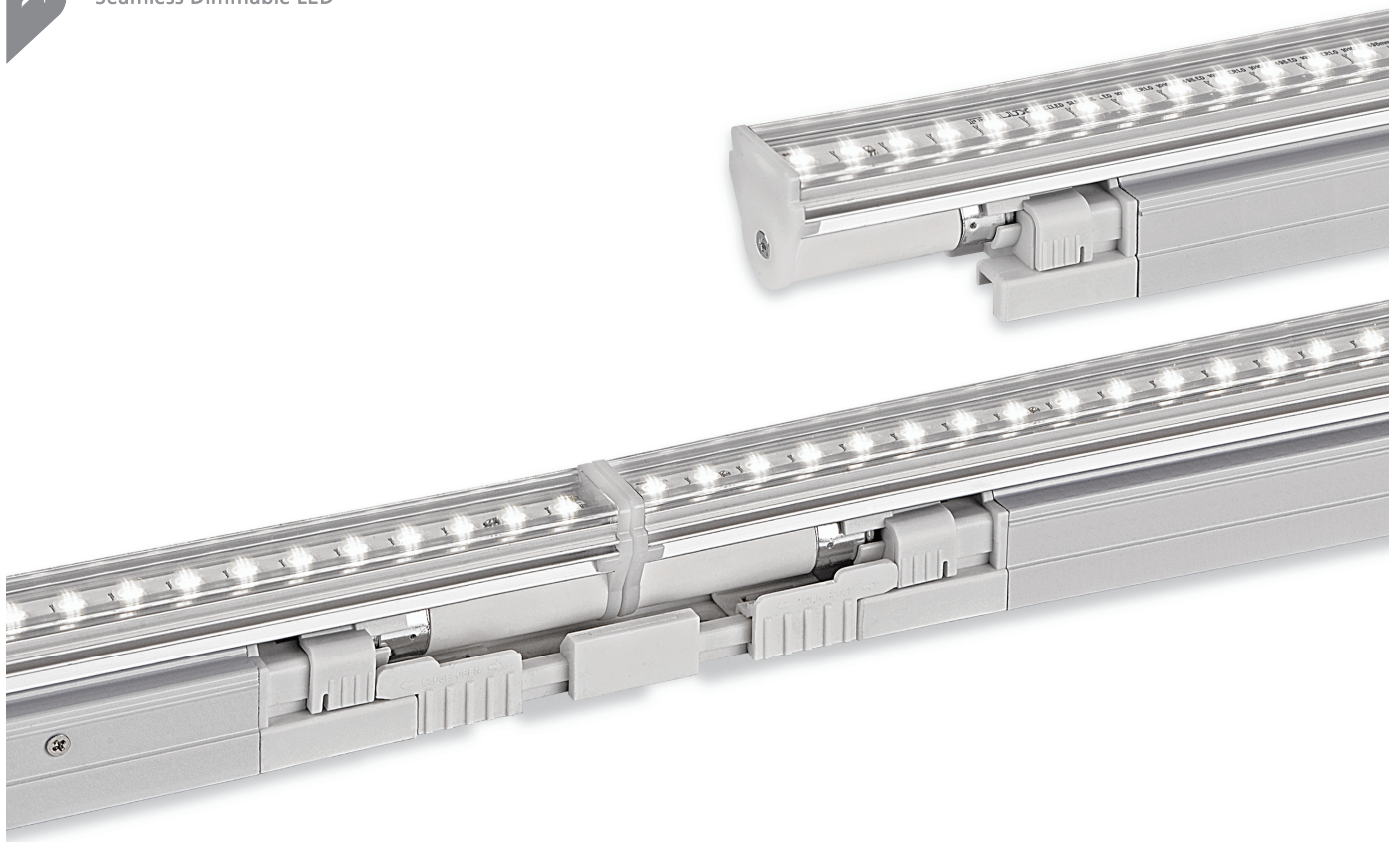


FEELED SlimLine

Seamless Dimmable LED

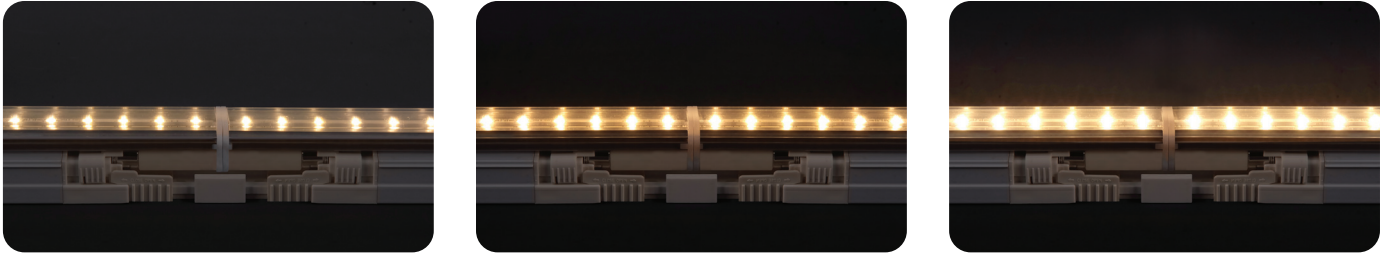


FEELED SlimLine

SlimLine LED's innovative design is the solution for eliminating dark spots in cove lighting. This unique and efficient fixture removes socket shadowing by placing the lamps closer together to provide seamless illumination.



Dimming



Accessories

① Connecting cables

DSLLPTC	DSLLPTC1	DSLLPTC2	DSLLPTC4	DSLLPTC6
150mm(6inch)	300mm(1feet)	600mm(2feet)	1200mm(4feet)	1800mm(6feet)

② Direct connector

SLLCPL

③ Connecting cable between fitting and dimming controller

DSLLOPC230

④ LED tube

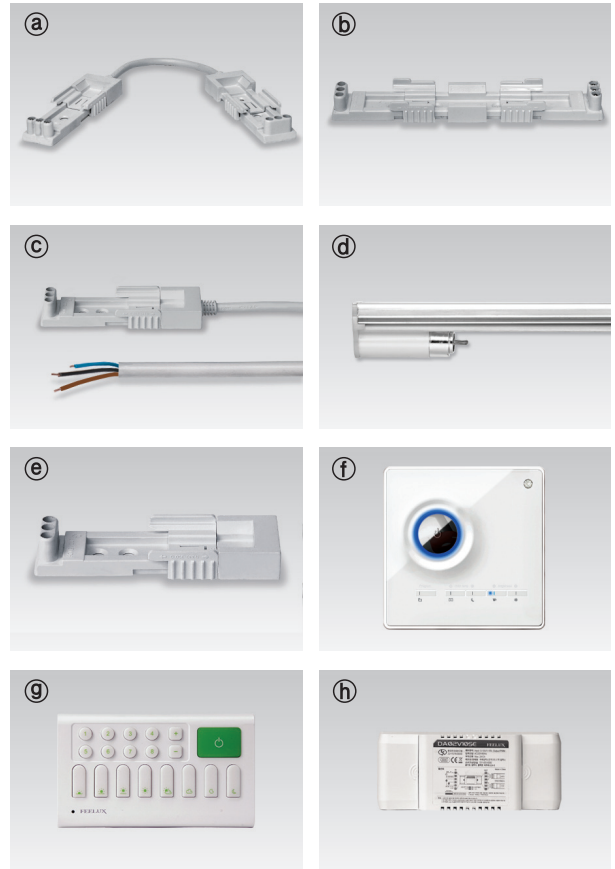
3000K, 4000K and 6500K

⑤ End cap

SLL-CAP

①~⑥ Dimming Controller

① Dimming Switch, ② Wireless control, ③ Interface



Product Features

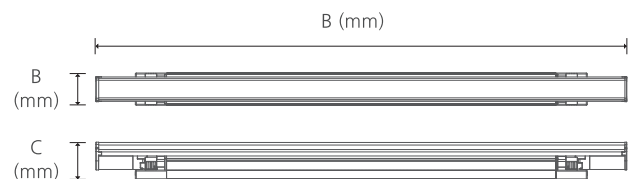
- Rigid aluminum extruded body permits effective heat emission
- Dark spot free at the linking point
- Transparent, Ivory white Diffuser
- Eco friendly product, No emission of Mercury and CO₂
- AC power driver built in (SMPS is not needed)
- Compatible with accessories for fluorescent DimSlimLine by PWM controller

Notice

Max. connection : 10pcs

Specification

- Frequency range : 50/60Hz
- Voltage : AC 220~240V
- Operating temperature : 0~50℃
- Lamp life : 30,000hr
- **Energy efficiency** 60 lm/W
- Available color : 3000K, 4000K, 6500K
- **Color rendering** Ra > 80



Model Name	Lamp Power (W)	A (mm)	B (mm)	C (mm)
LSLL10AB23/T	10	505	33	37.5
LSLL20AB23/T	20	1005	33	37.5