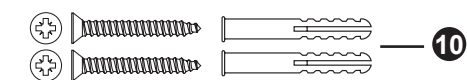
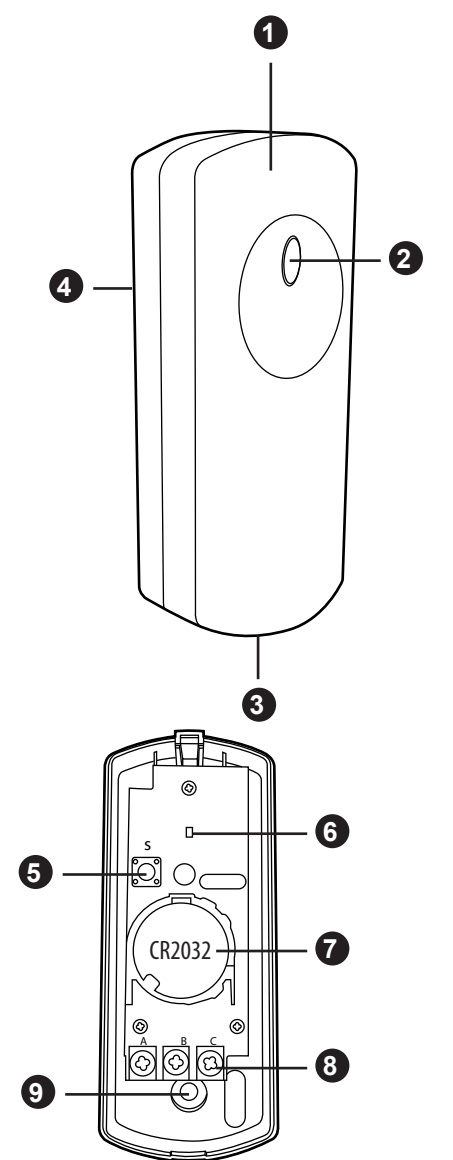


Byron™

Converter Unit

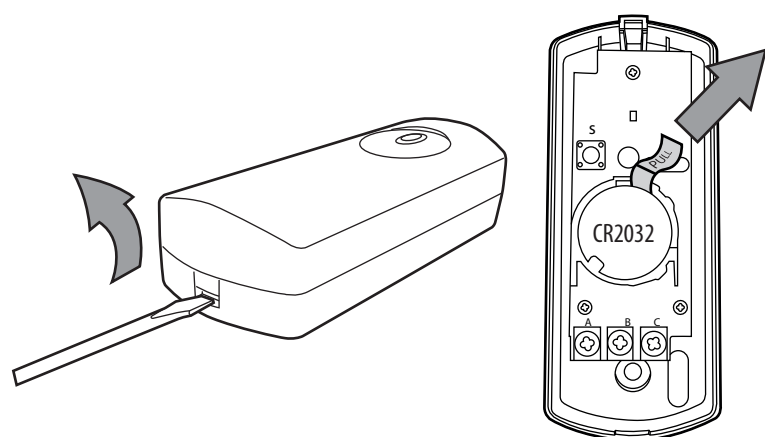


- 1 Converter
- 2 LED light
- 3 Open clip
- 4 Wall mounting hole
- 5 Melody select button
- 6 LED
- 7 Battery
- 8 Terminal block
- 9 Wire entrance hole
- 10 Wall plugs and screws

You will need

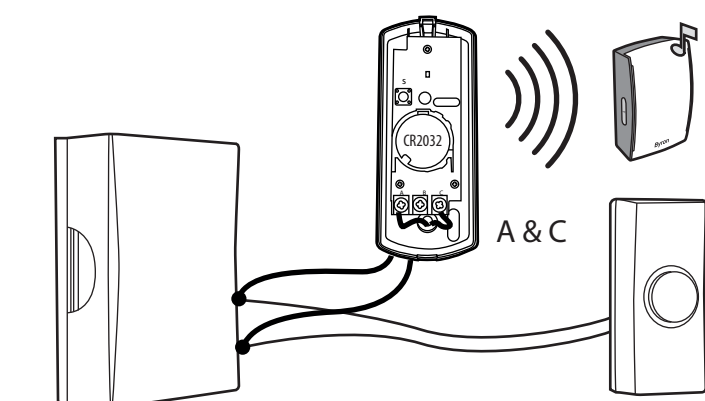


01

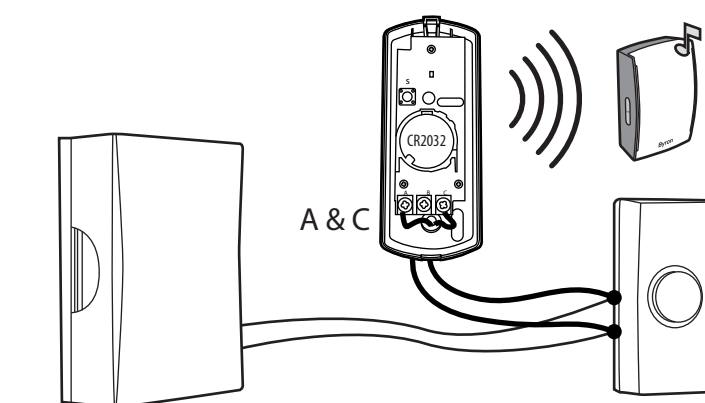


Option 2

Battery operated



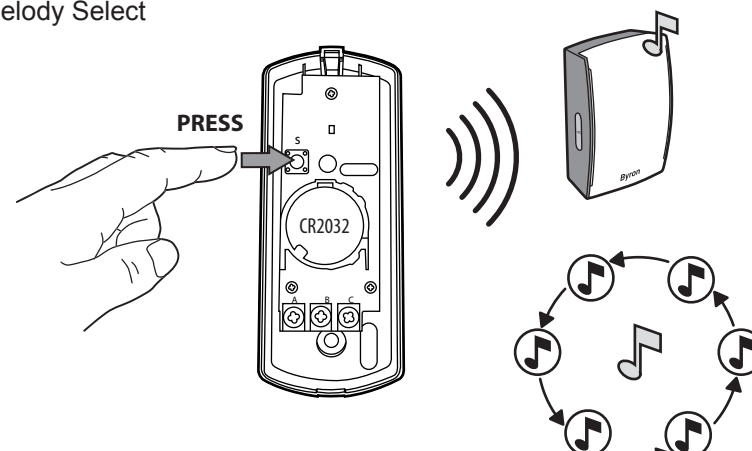
Connect to bell push terminals in bell



Connect to bell push terminals

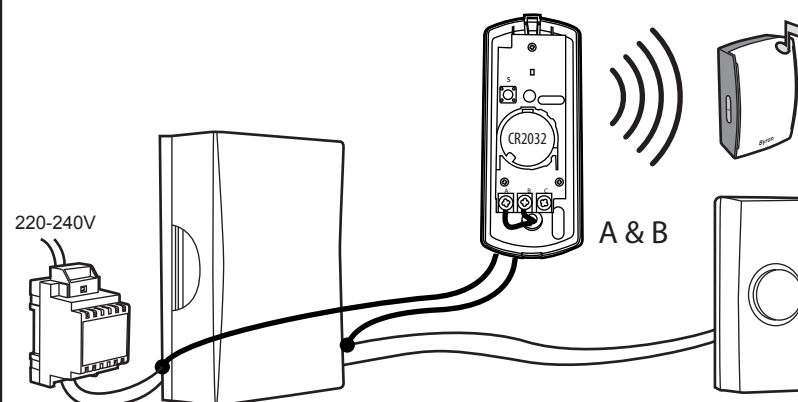
02

Melody Select

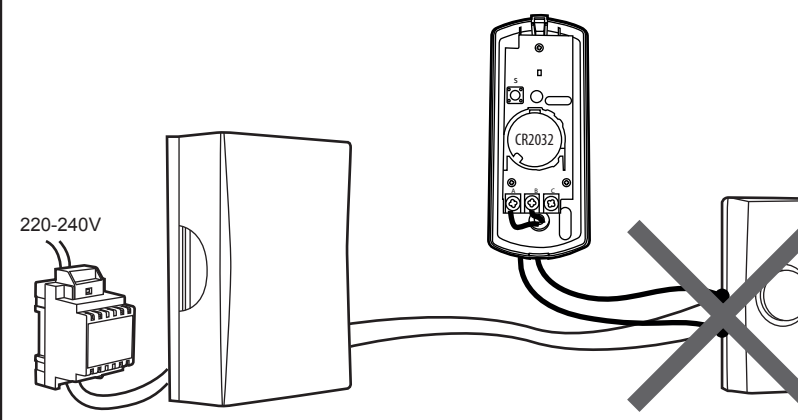


Option 3

Transformer operated



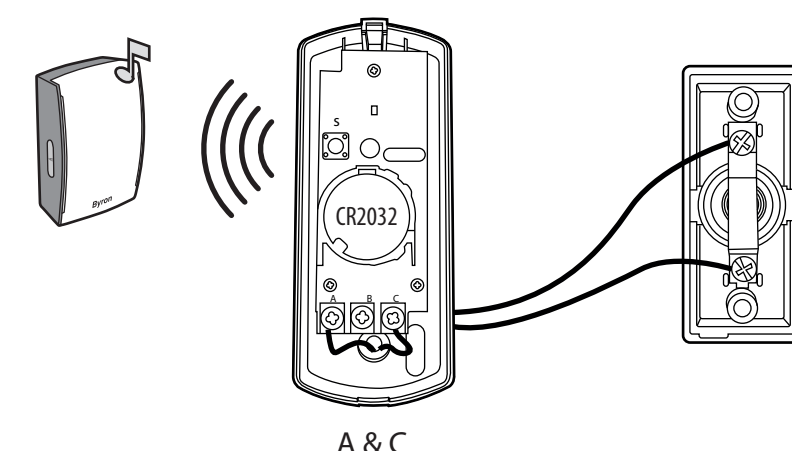
Connect to bell push terminals in bell



DO NOT CONNECT TO BELL PUSH TERMINALS

Option 1

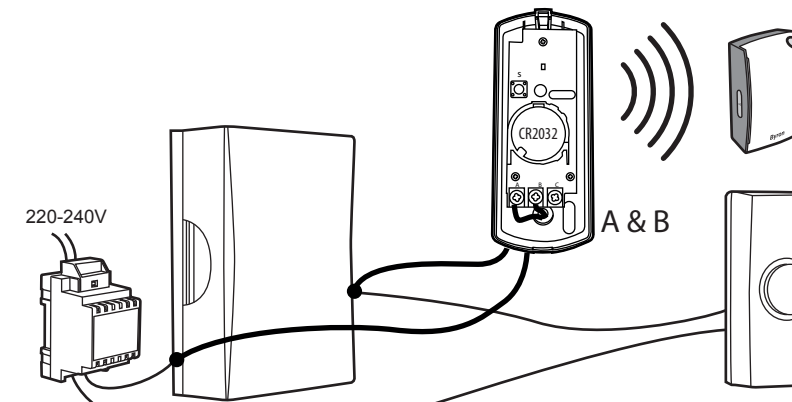
Battery operated



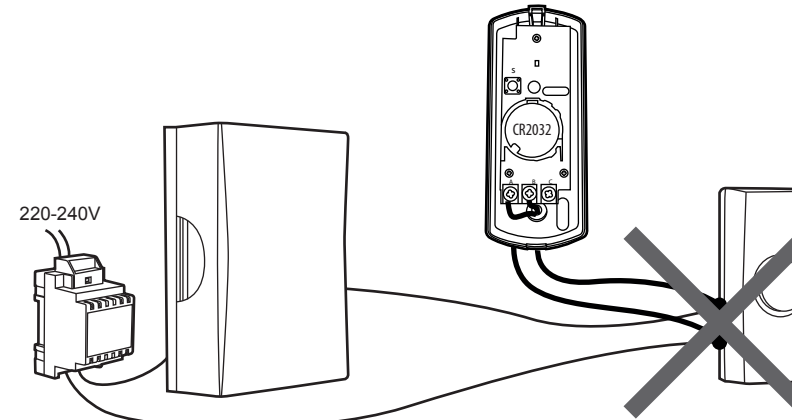
A & C

Option 4

Transformer operated



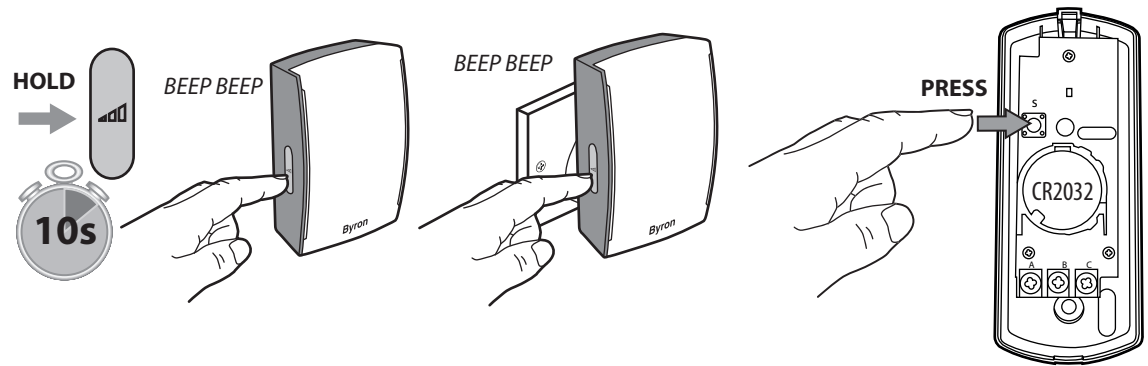
Connect to bell push & transformer terminals in bell



DO NOT CONNECT TO BELL PUSH TERMINALS

03

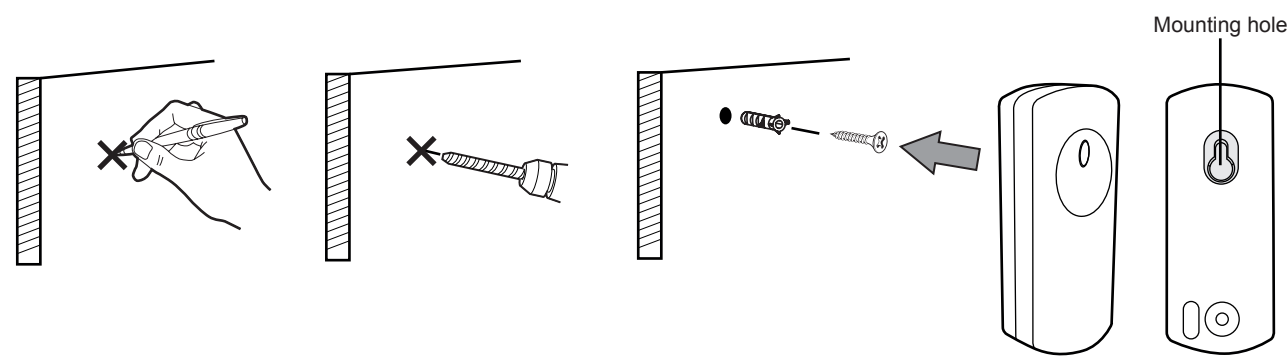
Pairing Wirefree Bells



NB: For full pairing instruction for door bells please check through Wirefree Bell manuals.

04

Mounting



Getting started...

Safety

- ☒ The ventilation should not be impeded by covering the ventilation openings with items, such as newspapers, tablecloths, curtains, etc...
- ☒ DO NOT allow this product to come into direct contact with heat or a naked flame.
- ☒ The normal operation of the product may be disturbed by strong electromagnetic interference.
- ☒ This equipment is intended for domestic use only.
- ☒ The appliance shall not be exposed to dripping or splashing.
- ☒ No objects filled with liquids, such as vases ,shall be placed on the appliance.
- ☒ Keep a minimum distance of 10 cm around the product for sufficient ventilation.
- ☒ Ensure the bell push is not mounted where it could become immersed by water/ rain.
- ☒ DO NOT allow children to play with this appliance.

Battery Warnings

- ☒ An adult must carry out battery replacement and installation.
- ☒ Remove exhausted batteries from this product.
- ☒ DO NOT dispose of batteries in a fire, batteries may explode or leak.
- ☒ DO NOT short-circuit the battery terminals.
- ☒ DO NOT mix used and new batteries.
- ☒ DO NOT mix alkaline standard (carbon-zinc), lithium or rechargeable batteries.
- ☒ DO NOT use rechargeable batteries in this product.
- ☒ DO NOT recharge non-rechargeable batteries.
- ☒ DO NOT allow any part to come in contact with heat or a direct flame.
- ☒ DO NOT allow water to come into contact with the batteries or wiring.
- ☒ Install carefully to prevent any damage to the batteries
- ☒ When installing batteries in the battery compartments, ensure the batteries are placed as marked (+)(-).
- ☒ Only the recommended batteries should be used.
- ☒ Remove batteries from product when not in use for long periods of time.
- ☒ Keep this product out of the reach of small children.
- ☒ Store unused batteries in their original packaging.
- ☒ Dispose of used batteries responsibly.

Technical Specifications

Converter unit
Power: 1x 3V CR2032 (included)
Consumption: 3.0mA - ON, 0.003mA - OFF
Operating Temperature: -10°C to +40°C
Operating Distance: 100 metres in open field
Works with all Byron **BY** range products only.



Smartwares Safety & Lighting declares that the appliance, model (BY32), Conforms to all relevant European Directives. The complete declaration of conformity is available on request at:

Smartwares Safety & Lighting
34, Sherwood Road
Bromsgrove
B60 3DR United Kingdom
www.chbyron.eu

Helpline

Help line number: 0845 2301231
Open 10am-4pm Mon-Fr, except Thurs 12:30pm-4pm.
Local call charges apply.

Recycling

This symbol is known as the 'Crossed-out Wheelie Bin Symbol'. When this symbol is marked on a product or battery, it means that it should not be disposed of with your general household waste. Some chemicals contained within electrical/electronic products or batteries can be harmful to health and the environment. Only dispose of electrical/electronic/battery items in separate collection schemes, which cater for the recovery and recycling of materials contained within. Your co-operation is vital to ensure the success of these schemes and for the protection of the environment



In more detail...

IMPORTANT - RETAIN THIS INFOMATION FOR FUTURE REFERENCE READ CAREFULLY