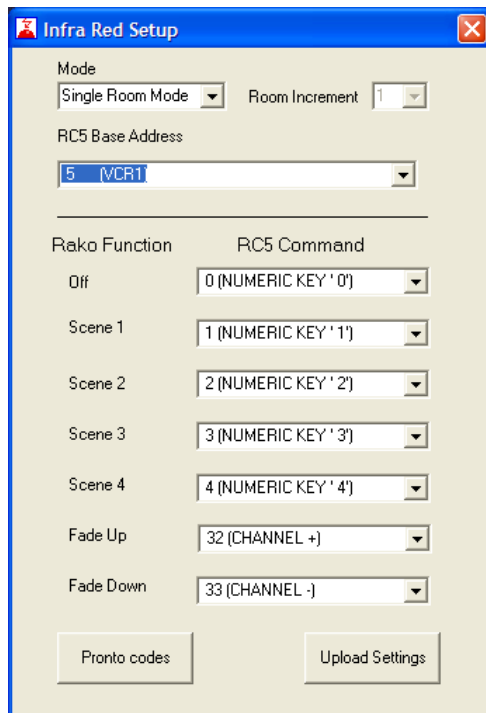




INFRARED SETUP INFORMATION – SINGLE ROOM

The RAVIR IR to RF interface is factory set to accept infrared codes using the **Philips VCR1** command set. This will enable control of scenes 1-4, off, master raise and lower in a single room, without the need to use the RASOFT PC programming software.



(screen shot from RASOFT PC software)

Setting the infrared hand set to transmit Philips VCR1 will enable the following functions:

Numeric button 1	=	Scene 1
Numeric button 2	=	Scene 2
Numeric button 3	=	Scene 3
Numeric button 4	=	Scene 4
Numeric button 0	=	Off
Channel + button	=	Raise
Channel - button	=	Lower

Philips Pronto Hex Codes for the above functions

OFF	500000730000000100050000
Scene 1	500000730000000100050001
Scene 2	500000730000000100050002
Scene 3	500000730000000100050003
Scene 4	500000730000000100050004
Fade Up	500000730000000100050020
Fade Down	500000730000000100050021

Note: To change the RC5 code from Philips VCR1 or to access advanced features such as multi-room and individual circuit control, the use of RASOFT PC programming software is required.