

MonoRail Spot

LED for Display, Cabinet, Furniture & Cove

Slide and Swivel Mini LED Spotlight





Product Features

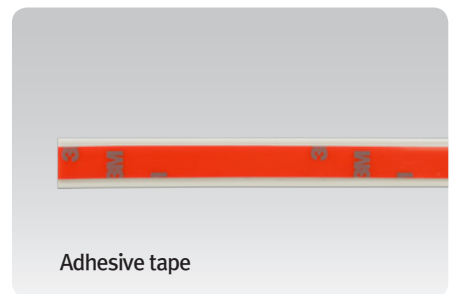
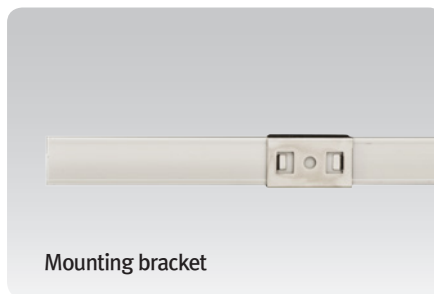
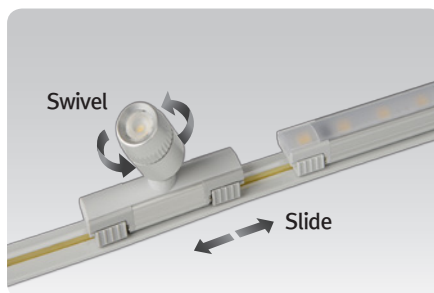
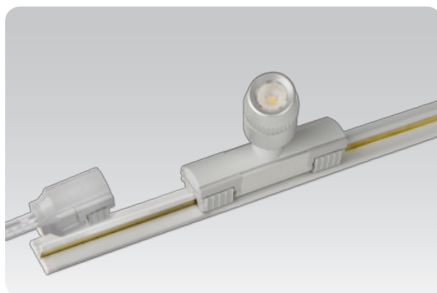
- Compatible and linkable with MonoRail system
- Slide and swivel mini LED spotlight
- Suitable for furniture and showcase application
- Simple Plug & Play connection to the power track
- Available in silver, black
- To be used with constant voltage DC 24V driver

Specification

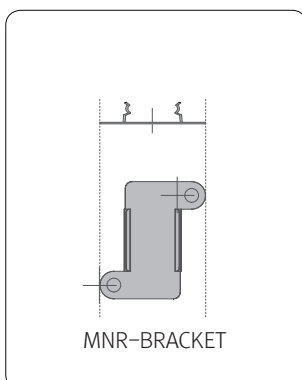
- Voltage : DC 24V
- Operating temperature : 0~45° C
- Lamp life : 40,000hr / 70%
- Available color : 2700K, 3000K, 4000K, 6000K
- Color rendering : Ra > 85
- Energy efficiency : 65lm/W
- Degree of protection : IP20
- Beam angle : Standard : 30° / Optional : 18°, 45°
- Total energy consumption of 1.3W
- Available in silver, black



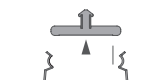
Easy connection



Installation

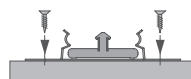


step.1



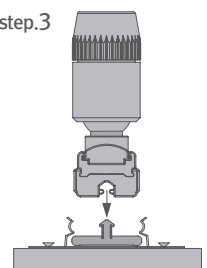
Clip MNR-BRACKET on MNR-Rail.

step.2



Fix MNR-BRACKET with screws on surface.

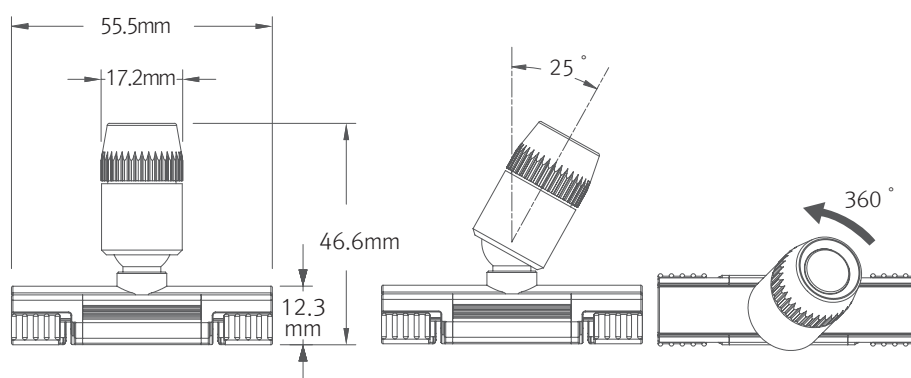
step.3



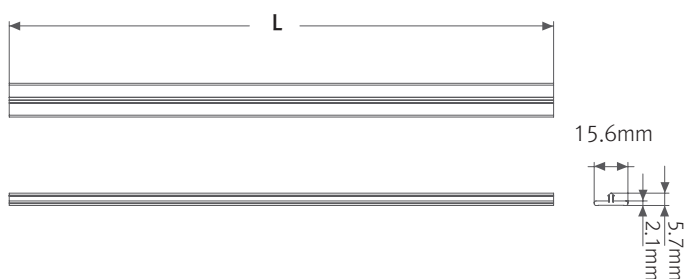
Put MonoRail Spot on installed MNR-Rail.

Dimension

Fixture



MNR-Rail extrusion line



Max. connection

- MonoRail Spot :180W in one row (Single power feed)
- LED Driver

LED Driver Model Name	Max. units for LED Driver			
	24V/15W	24V/30W	24V/75W	24V/200W
MRS1 40K-24V-SV	10	20	52	140

Accessories



(a) MonoRail Spot

Silver	Black
MRS1 40K-24V-SV	MRS1 40K-24V-BK



(b) Power supply track : MNR-Rail (20m)

Power supply track in Roll without adhesive
Color : White, Gray, Black



(c) Power supply track : MNR-Rail (1.2m)

Power supply track with adhesive tape
Color : White, Gray, Black



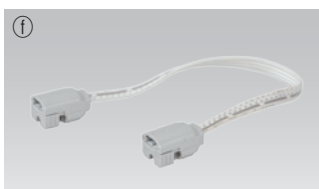
(d) Adhesive tape

Adhesive tape for MNR-Rail (16.5m)



(e) Power supply cable to the MNR-Rail : MNRPC (2500mm)

120W in one row (w/ terminal block)
180W in one row (w/o terminal block)



(f) Connecting cable between MNR-Rail

MNRPTC	MNRPTC1	MNRPTC2	MNRPTC4	MNRPTC6
150mm(6inch)	300mm(1feet)	600mm(1feet)	1200mm(4feet)	1800mm(6feet)



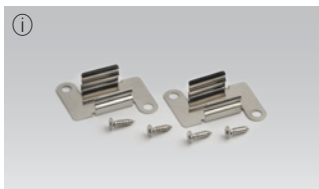
(g) LED Driver with 6way distributor, with power cord (1800mm)

Part NO	FLC15-24V/T	FLC30-24V/T	FLC75-24V/T
Capacity	24V/15W	24V/30W	24V/75W

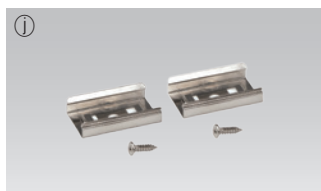


(h) LED Driver : FLC200-24V/T (200W 24V)

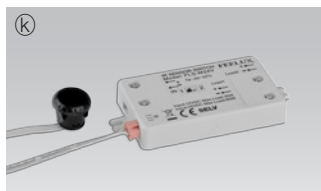
LED Driver With 6way distributor



(i) MonoRail bracket : MNR-BRACKET (standard)

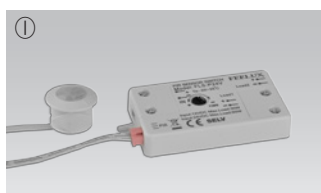


① MonoRail bracket : MNR-BRACKET1 (optional)



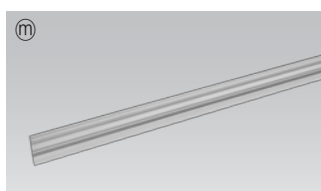
② Door and motion detection sensor (DC) : FLS-M24V

Voltage : DC 24V



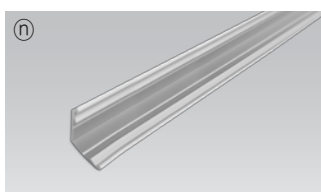
③ Human-body detection sensor (DC) : FLS-P24V

Voltage : DC 24V



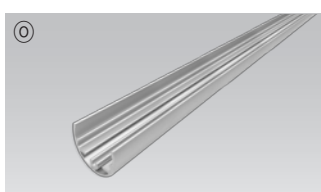
④ MNR-Rail extrusion line (1.2m)

Silver	Black
MNR-EXL-SV	MNR-EXL-BK



⑤ MNR-Rail extrusion corner (1.2m)

Silver	Black
MNR-EXC-SV	MNR-EXC-BK



⑥ MNR-Rail extrusion pole (1.2m)

Silver	Black
MNR-EXP-SV	MNR-EXP-BK



⑦ End cap : MNR-CAP

Color : White, Gray, Black

* More detail information about accessories, please refer to MonoRail page no.13