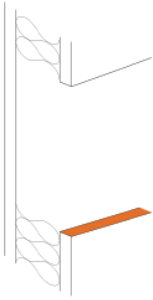
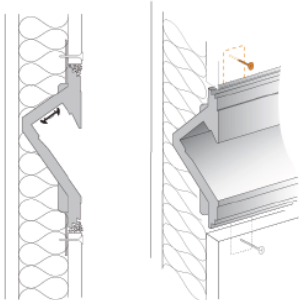


Installation Instructions

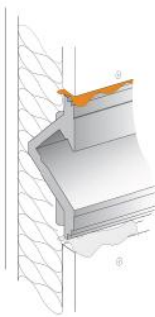
MicroBlade 35, MicroBlade 50 & MicroBlade 63



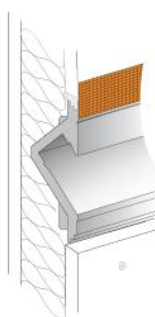
1. Cut an aperture according to the dimension specified.



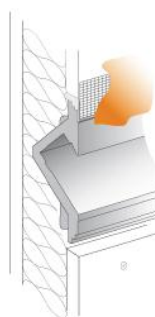
2. Place the MicroBlade profile within the aperture and screw through the wall into the mounting plate.



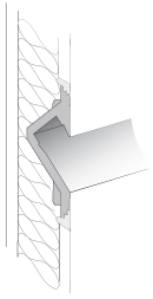
3. Fill in the joints with plaster glue or plaster coating.



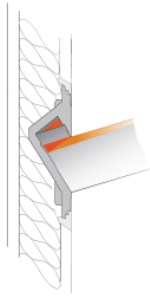
4. Place connection band on the joint and skim over it.



5. Finish the joint with thin sandpaper.



6. Finish the mounting with paint or any kind of coating.



7. Install the LED equipment and the diffusing screen (available as an option)

Tools Needed For Recessing MicroBlade Into Walls or Ceilings

- Plaster based glue (for coating)
- Acrylic glue
- Spreading knife and sandpaper
- Drilling machine and screws.
- Plaster saw and grinder
- Joint tape



