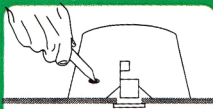


CEILING TO LOFT VOID VAPOUR & THERMAL SEAL FOR DOWNLIGHTS

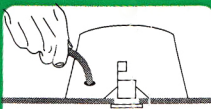
Prevents vapour transmission and heat loss

Loftcap

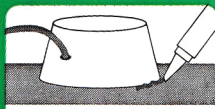
Tested and approved by the Lighting Association



Using a sharp point make access hole for power supply cable. Access hole should be snug fit and positioned on side of Loftcap



Pass power supply cable through side of Loftcap. Ensure power supply cable is not compressed by the cord grip when attaching to light fitting.



Create a seal around bottom edge of Loftcap using mastic type sealant. Loft insulation can be laid over the Loftcap

NB. Loftcap is only suitable for use in plasterboard, ceiling tile and other non-combustible ceilings

NB. Loftcap is fire rated to BS476: Part 20 for 60 minute plasterboard ceilings

NB. For use with downlights MAX 50WATTS

Fragile - Handle with Care



ALC274