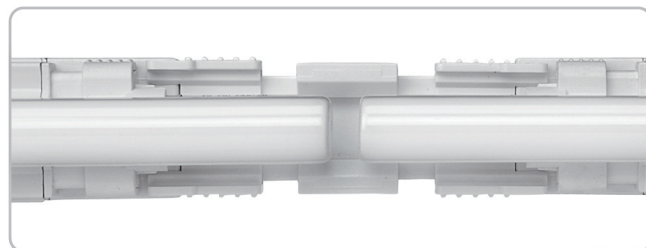


DimSlimLine

T5 Seamless Dimmable Illumination



DimSlimLine

SlimLine's innovative design is the solution for eliminating dark spots in cove lighting. And Feelux's dimming technology is also applied to the Seamless Illumination. High Output types as well as High efficiency are available.

Product Features

- Built in electronic ballast
- Allows easy connection, saves installation time
- Rigid aluminum extruded body and snap-in mounting brackets.
- Remote ballast optimized for SlimLine tube is available.

Benefits

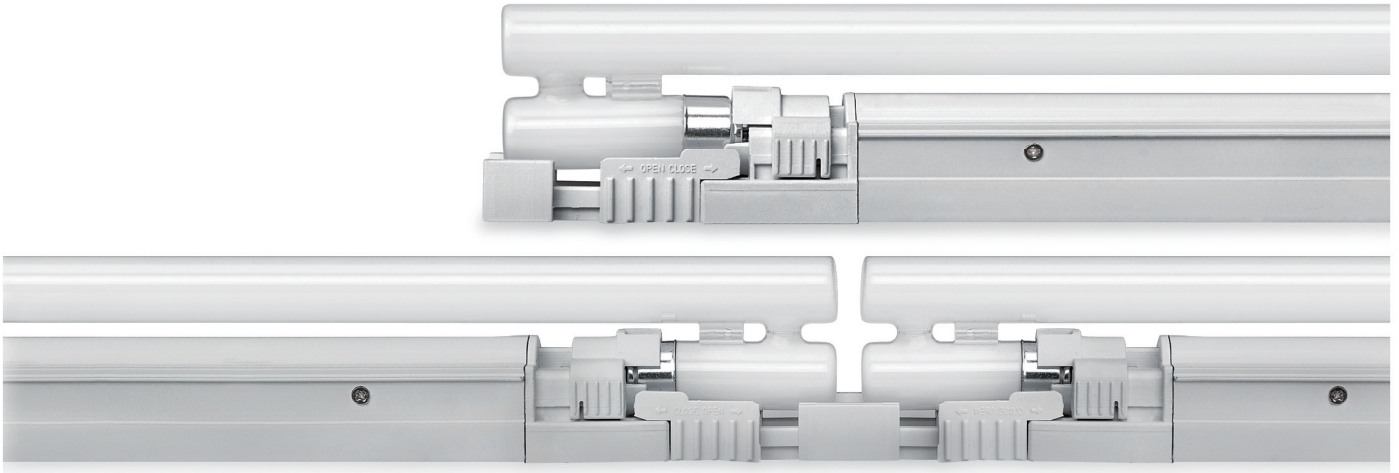
- Dark spot free at the linked site with innovative lamp
- Unique design concept to accommodate the newly-developed lamps
- Instant on starting, quiet and flicker free
- Extremely bright with T5 HO ballast
- Protection from lamp End of Life(EOL), no load, overload, and cross wiring.
- Stable dimming status
- Satisfy world class standard, CE certified

Specification

- Frequency range : 50/60Hz
- Voltage : 220~240V, 110~130V
- Power factor : >97%
- Color rendering : Ra>80
- A-thd : <15%
- EMI test : EN55015
- Class of protection II
- Degree of protection IP20
- Output protocol : PWM
- Dimming range : 5~100%

Notice

Max. connection : 10pcs/CH
Please refer to Dimming Controller section.



Accessories

a Connecting cables

DSLLPTC	DSLLPTC1	DSLLPTC2	DSLLPTC4	DSLLPTC6
150mm(6inch)	300mm(1feet)	600mm(2feet)	1200mm(4feet)	1800mm(6feet)

b Direct connector : SLLCPL

c Power cord

(Between DimSlimLine(in) & Dimming Controller(out) w/o plug)
DSLLOPC230

d Fluorescent lamps

2200K, 2700K, 3000K, 3500K, 4000K, 6500K, 8000K, Red,
Green and Blue are available.

e Diffuser

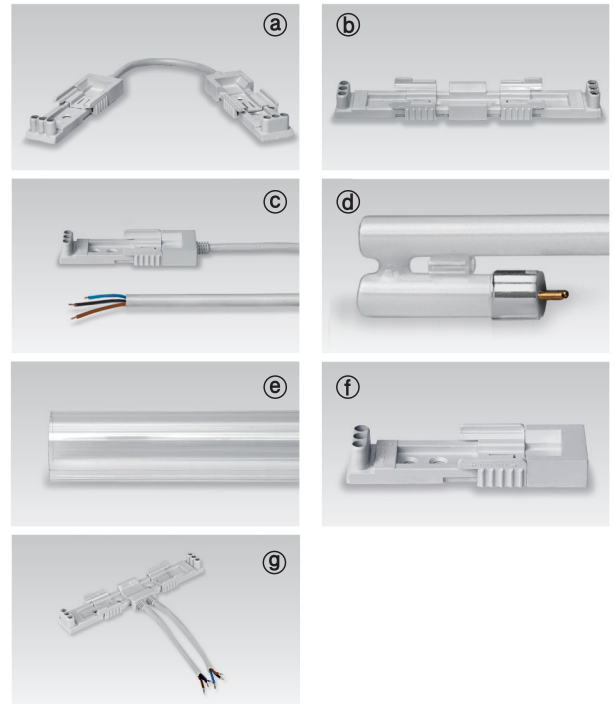
SLL14CV	SLL21CV	SLL28CV
14, 24W	21, 39W	28, 54W

f End Cap : SLL-CAP

g Booster Connector : SLLCPLH/T

h Dimming controller

Please refer to Dimming controller section



Model Name	Lamp Power(W)	A (mm)	B (mm)	C (mm)	D (mm)	E (mm)
DSLL14AB23NN	14	582	496.5	44.3	26.6	34
DSLL21AB23NN	21	882	796.5	44.3	26.6	34
DSLL28AB23NN	28	1182	1096.5	44.3	26.6	34
DSLL35AB23NN	35	1402	1316.5	44.3	26.6	34
DSLL24AB23NN	24	582	496.5	44.3	26.6	34
DSLL39AB23NN	39	882	796.5	44.3	26.6	34
DSLL54AB23NN	54	1182	1096.5	44.3	26.6	34



Dimming Switch



Wireless control



Interface

