

INSTRUCTION FOR DECOLUME STRIP LIGHT DSL-12V, DSL-24V

SPECIAL FEATURES:

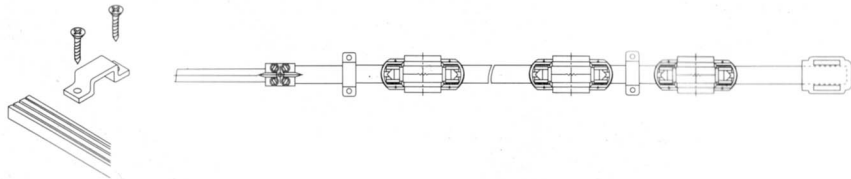
1. Flexible material creates versatile elegant lighting effects.
2. Available in any length and in multi lamp spacing.
3. Easy to install and labor saving.
4. Able to use Festoon bulbs or halogen lamps.
5. No effect on other lights when one bulb burnt out.

SPECIFICATIONS:

Input Voltage	240VAC, 60Hz
Output Voltage	12VAC or 24VAC, 60Hz
Festoon Bulb	12V/5W, 12V/10W or 24V/5W, 24V/10W
Halogen Lamp(MR-11)	12V/20W, 12V/35W or 24V/20W, 24V/35W
Temperature Resistance	-5°C TO +60°C
Life Span	1000Hours

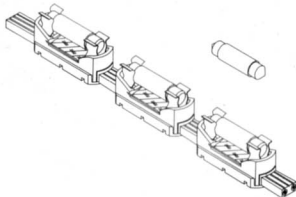
HOW TO INSTALL DECOLUME STRIP LIGHT:

1. Use the terminal block to connect to the Class 2 transformer output wires.
2. Please check for the minimum output of the transformer suitable for the maximum power of the DECOLUME STRIP LIGHT.
3. Insert the end cap to the end of main cable.
4. Use the plastic mounting clip to install the main cable.
5. Install in building of fire resistive construction. Mount on non-combustible material.



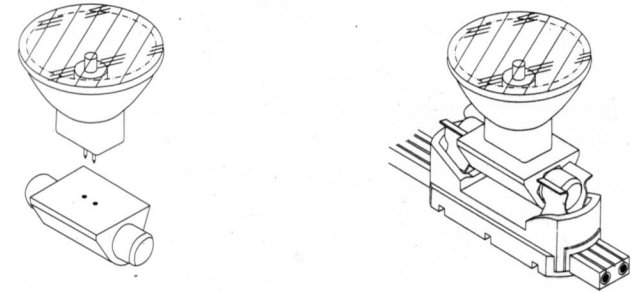
HOW TO INSTALL THE FESTOON BULBS:

1. Insert the metal pin of Festoon bulb into the lamp socket.
2. Make sure use the Festoon bulb for same voltage and power.



HOW TO INSTALL THE HALOGEN LAMPS:

1. Insert the Halogen lamp to the special lamp base for MR-11.
2. Insert the MR-11 lamp base into the socket.
3. Rotate the lamp base to desired direction.
4. Make sure use the Halogen lamp for same voltage and power.



HOW TO INSTALL THE REFLECTION PLATE:

1. Remove the paper cover from the double sided tape adhered on the back of the reflection plate.
2. Paste the reflection plate onto the top piece of the lamp socket.
3. For festoon bulbs only.

CAUTION

1. Suitable for dry locations only.
2. Ceiling mounted and wall mounted Incandescent Fixtures,
3. Install in building of fire resistive construction. Mount on non-combustible material.
4. Continuous-Row mounting.
5. Do not plug into power source before completing installation.
6. Check that the output power of the transformer corresponds to the rated power of the bulbs.
7. Do not mount or support the DECOLUME STRIP LIGHT in a manner that can cut the outer jacket or damage the wire insulation.
8. Be sure to pull out the plug from power source before changing the bulb to prevent any electrical shock.
9. Do not cover the DECOLUME STRIP LIGHT WHEN IT IS IN USE.
10. For use with Class 2 transformer only, please check the specification for the minimum output power.
11. 12V Electronic transformers must be placed within 20cm of the strip and the strip must not exceed 2m.
12. 12V Toroidal transformers must be placed within 20cm of the strip and the strip must not exceed 3m in length.
13. 24V Toroidal transformers must be placed within 20cm of the strip and the strip must not exceed 4m in length.