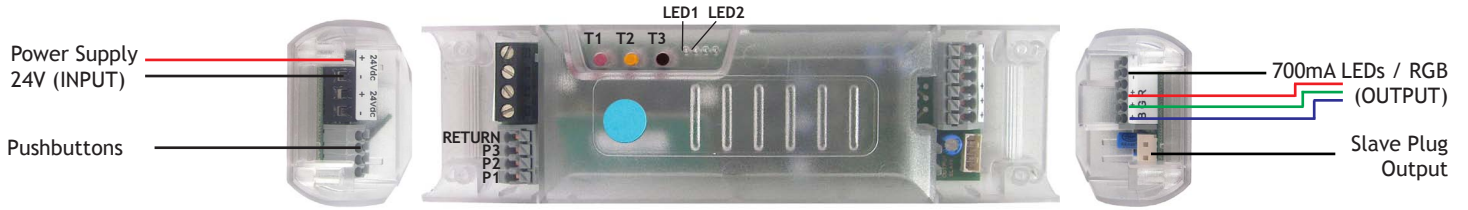


CHAMELEON 700MA / 42W



T1 ● - Programming
T2 ● - Programming On/Off function
T3 ● - Reset - Light Test - Light Memory

Led 1 - Receiving RF signal
Led 2 - Command Executed

P1 - Will turn the lights on at their previous setting.
P2 - Activates the automatic colour cycle.
P3 - Turns off the lights.

700mA Top Selling RGB Products



SPECDA18W RGB Downlight IP54



UL010 Spotlight IP68



SPECDL18W RGB Downlight

Height 35mm
Width 46mm
Length 165mm
Cut-out 50mm
Max Wattage 42 Watts
LED Type 700mA
Input Voltage 24V DC

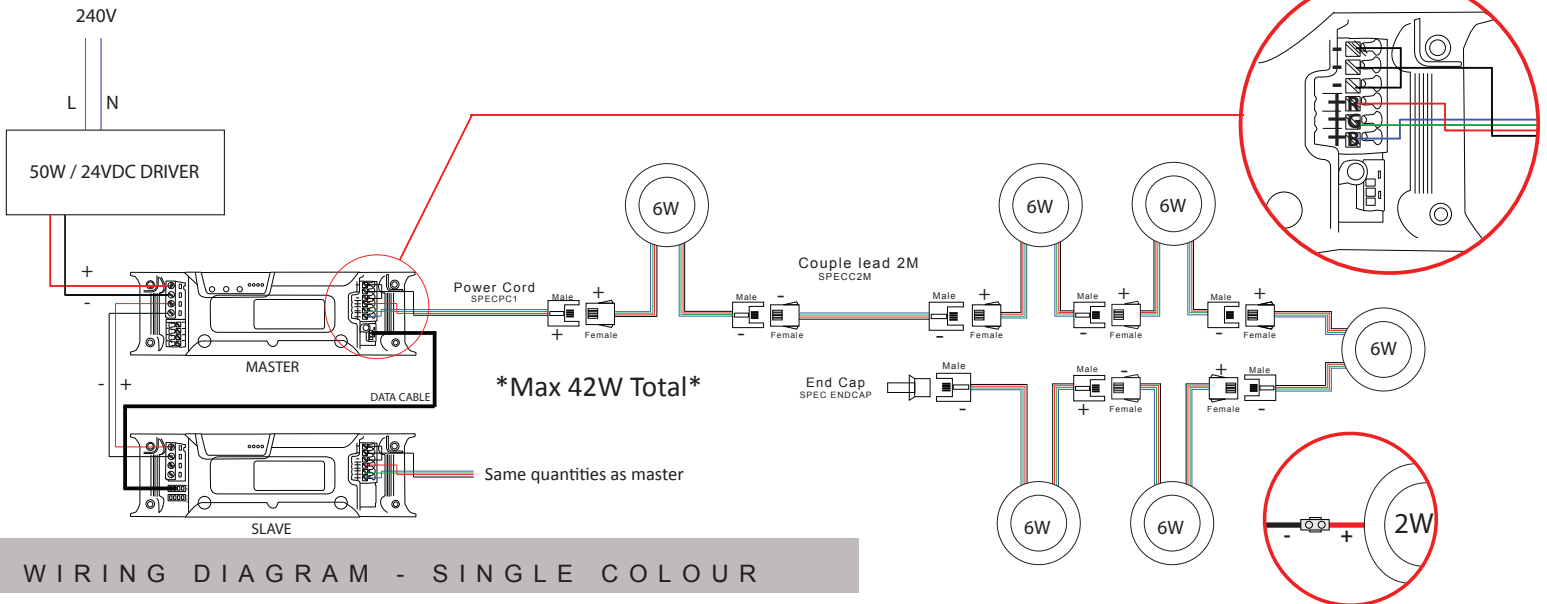


Part No.
WISERGB 700mA M (Master)
WISERGB 700mA SL (Slave)
WISERGBBOX 700 M (IP54 Box)

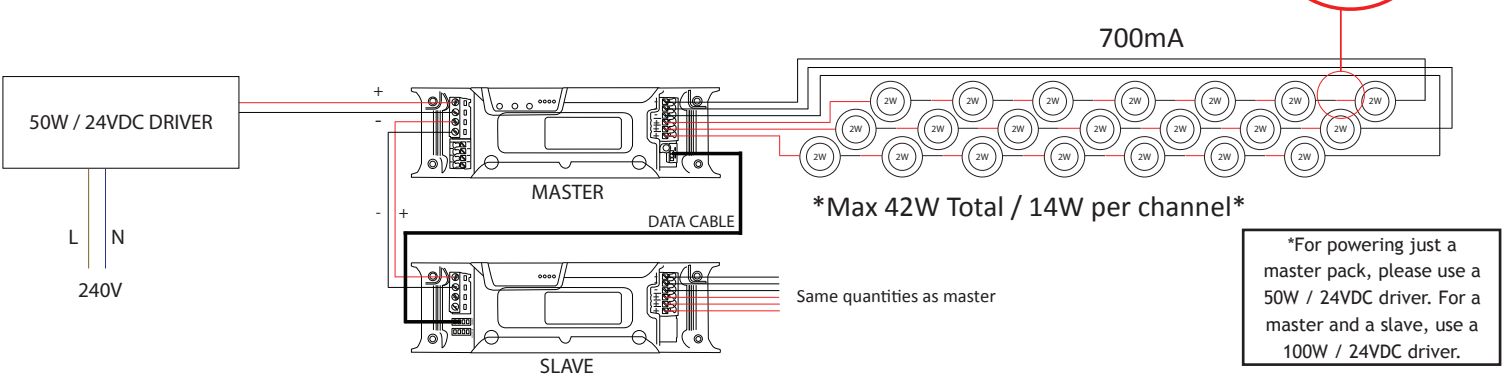
Programming:

Full Colour Scrolling - A
1 Button Colour Stepping - B
Dim Single Colour LEDs - C
Warm White Dimming - D
Master On / Off button - E

WIRING DIAGRAM - RGB



WIRING DIAGRAM - SINGLE COLOUR



*For powering just a master pack, please use a 50W / 24VDC driver. For a master and a slave, use a 100W / 24VDC driver.

PROGRAMMING OPTIONS

OPTION A - FULL COLOUR CHANGING with RGB LEDs, using one of the 7 BUTTON WIRELESS SWITCHES

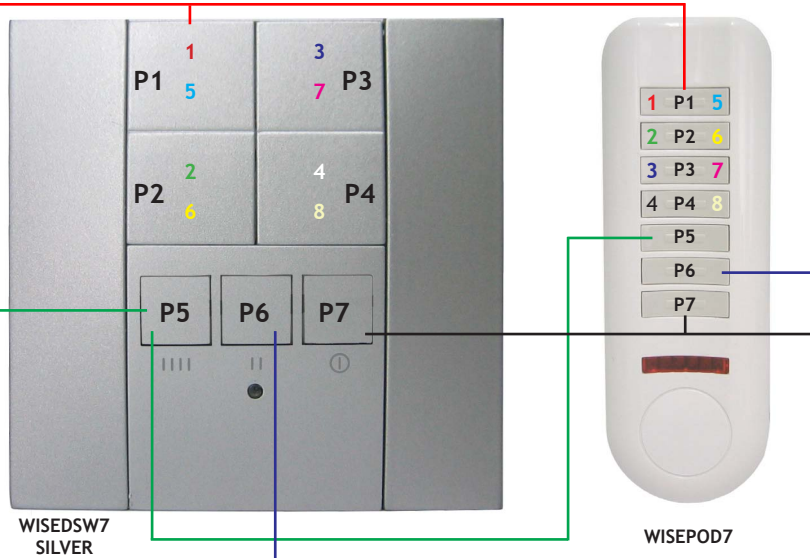
PRESS BUTTON P1,P2,P3 OR P4 TO ACCESS COLOURS;

- 1 RED*
- 2 GREEN*
- 3 BLUE*
- 4 WHITE*

PRESS BUTTON P5, THEN PRESS P1,P2,P3 OR P4 TO ACCESS COLOURS

- 5 CYAN*
- 6 YELLOW*
- 7 MAGENTA*
- 8 WARM WHITE*

* Holding any of these colours down will operate the dimming function.



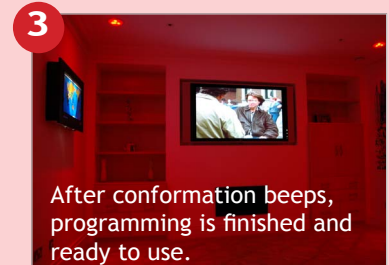
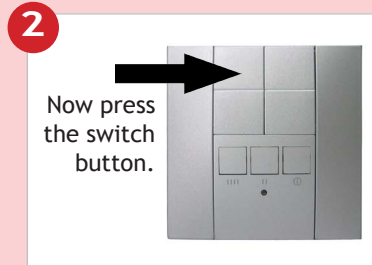
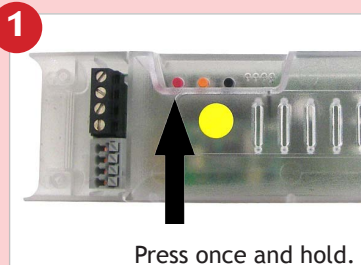
P6 PRESS ONCE FOR COLOUR CYCLING. PRESS AGAIN TO REVERSE CYCLE.

WHILST COLOUR CYCLING, TO CHANGE THE SPEED PRESS BUTTON:

- P1 = FAST (4 Sec fade/1 Sec pause)
- P2 = MEDIUM (16 Sec fade/6 Sec pause)
- P3 = SLOW (28 Sec fade/10 Sec pause)
- P4 = PAUSE/GO

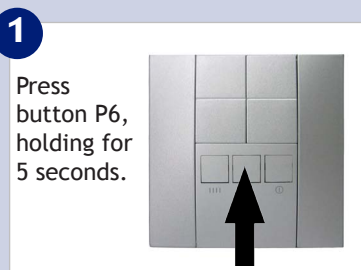
OFF

OPTION A1 DIMMING AND SWITCHING RGB LEDs using our 7 BUTTON WIRELESS SWITCH



On the Chameleon pack press button T1 once and hold (you will hear 1 beep), then press button P1 on the switch at the same time. This will program all 7 buttons. The chameleon is ready to use. If after programming only 1 of the buttons change the colour please delete the memory and try again.

OPTION A2 REPROGRAMMING THE PRESET COLOURS from a WIRELESS SWITCH



To save your own preset colours, simply hold down button P6 until the lights flash 2 times and then start scrolling through the spectrum. Wait until you reach the colour you like, then hold down the button of the preset colour you wish to replace. The lights will flash to show the programming has been completed successfully.

Different Switches Available



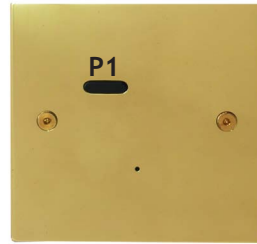
1 button retro switch
WISEFL17 1G



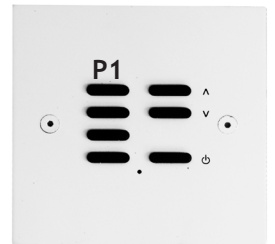
1 button keyfob
WISEKF1



1 button style switch
WISEDSW1



7 button ID switch
WISECDSW1 PB



7 button ID switch
WISECDSW7 MW

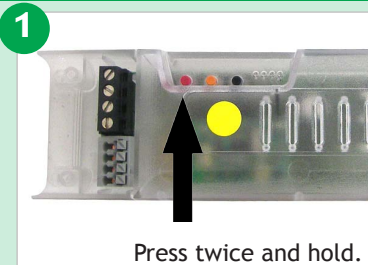
OPTION B

COLOUR STEPPING with RGB LEDs, using ONE OF THE BUTTONS ON A WIRELESS SWITCH

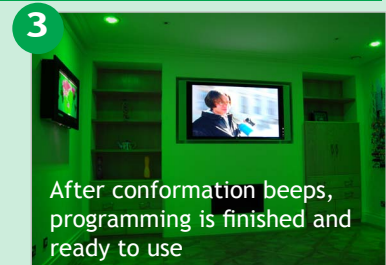
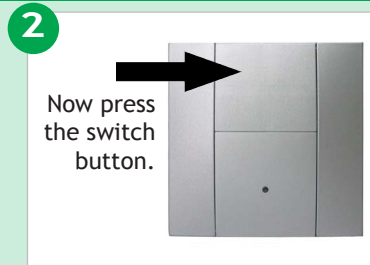
PRESS P1 BUTTON TO STEP TO NEXT COLOUR.

- 1 RED
- 2 GREEN
- 3 BLUE
- 4 WHITE
- 5 CYAN
- 6 YELLOW
- 7 MAGENTA
- 8 WARM WHITE

HOLD TO DIM



On the Chameleon pack press button T1 twice and hold (you will hear a beep after every press), then press the button on the switch at the same time. The switch has now been linked to the receiver and will flick through each of the eight colours with every press of the switch button. To turn off the switch, simply hold the button down for a few seconds.



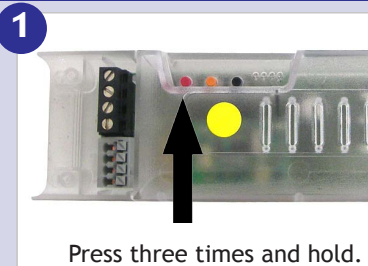
OPTION C

DIMMING AND SWITCHING single colour LEDs (or RGB) using one of the buttons on a WIRELESS SWITCH

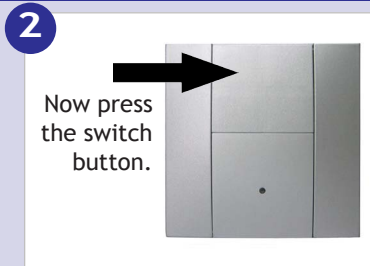
PRESS P1 BUTTON TO TURN ON or OFF.

Please note; if a colour change LED is used with this function you will only achieve a white colour. You can connect a single colour LED and dim.

HOLD TO DIM



On the Chameleon pack press button T1 three times and hold (you will hear a beep after every press), then press button P1 on the switch at the same time. This will link the chameleon pack to the switch and is now ready to use. If RGB fittings are connected, the light will emit a cool white, while single colour LEDs emit their regular colour.



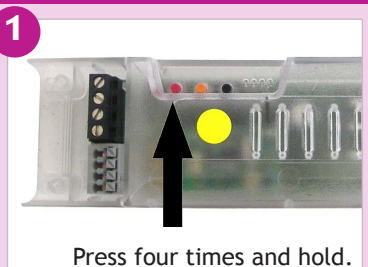
OPTION D

DIMMING AND SWITCHING WARM WHITE with RGB LEDs, using one of the buttons on a WIRELESS SWITCH

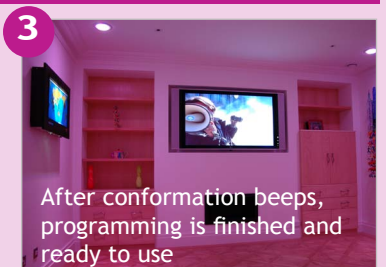
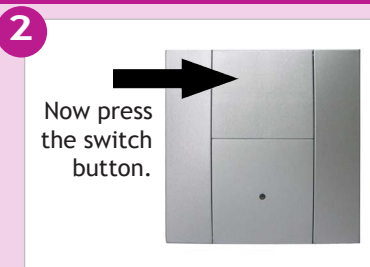
PRESS P1 BUTTON TO TURN ON or OFF.

Please note; When a colour change LED is used with this function you will only achieve a Warm White colour which can then be fully dimmed.

HOLD TO DIM



On the Chameleon pack press button T1 four times and hold (you will hear a beep after every press), then press button P1 on the switch at the same time. This will link the chameleon pack to the switch. The chameleon is ready to use. RGB fittings will emit a Warm White light which has full dimming functions

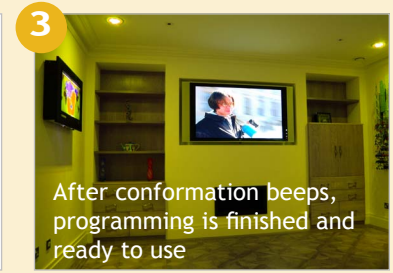
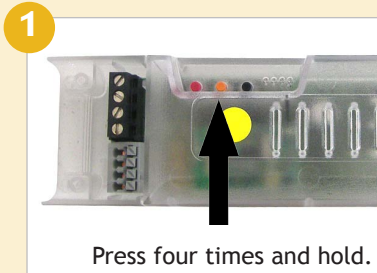


PROGRAMMING OPTIONS

OPTION E

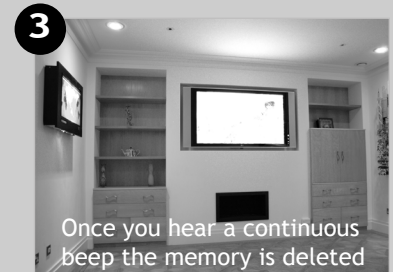
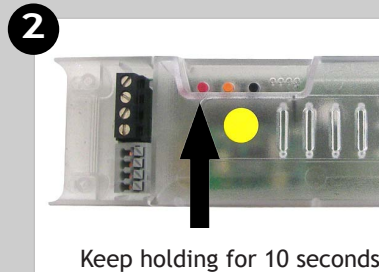
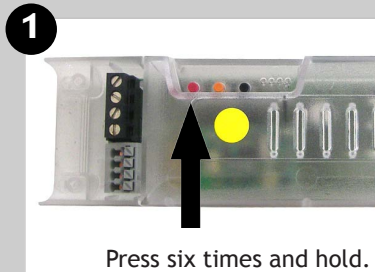
MASTER ON / OFF BUTTON with either RGB LEDs or single colour LEDs using one of the buttons on a **WIRELESS SWITCH**

PRESS BUTTON P1 TO TURN ON or OFF.



On the Chameleon pack, press button T2 once for an 'All On' button, or twice for an 'All Off' function and then hold (you will hear a beep). Now press button P1 on the switch within 3 seconds. This will link the chameleon pack to the switch and is now ready to use. These functions are primarily used with multiple packs, and can be programmed so that more than 1 pack can turn on / off at the same time.

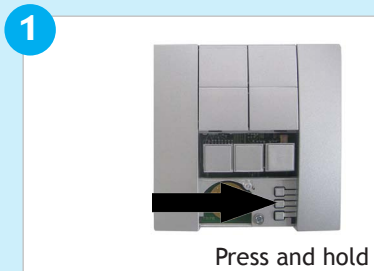
DELETING THE MEMORY from a Wise Chameleon Receiver



To delete the memory, simply press the T1 button 6 times. On the last press hold for at least 10 seconds. (The buzzer will sound intermittently) After 10 seconds, the buzzer will start making a continuous beep to show that the deletion has been successful.

EXTRA FUNCTIONS 1 Copy a switch from 1 to another

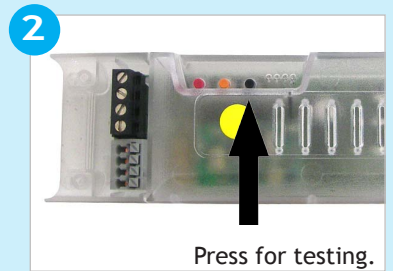
Allows you to copy 1 switch to another while avoiding having to access the receiver.



Remove the switch battery cover and press the middle button. Within 5 seconds, press the button you wish to copy, then press the button you wish to copy it to. An intermittent beep will sound if programming is successful.

EXTRA FUNCTIONS 2 Test button

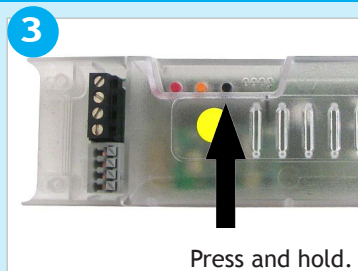
The test button allows the lights to emit their full colour. (RGB will be white)



Ensure you have wired correctly before programming by pressing the T3 button. The lights will switch on fully for the period of time that the button is held down for. (maximum of 10 seconds)

EXTRA FUNCTIONS 3 Restore Preset Colours

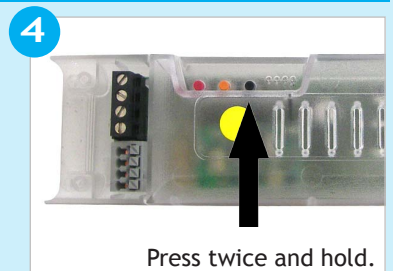
Restores preset colours to their factory settings.



Press T3 and hold for 10 seconds. The lights will flash to show programming is successful. The preset colours will now be back to their factory settings.

EXTRA FUNCTIONS 4 Turn light memory on / off

Light memory will always return your lights to their previous setting when switched back on



Press T3 twice, holding on the second press for 10 seconds. The lights will flash to show programming is successful.