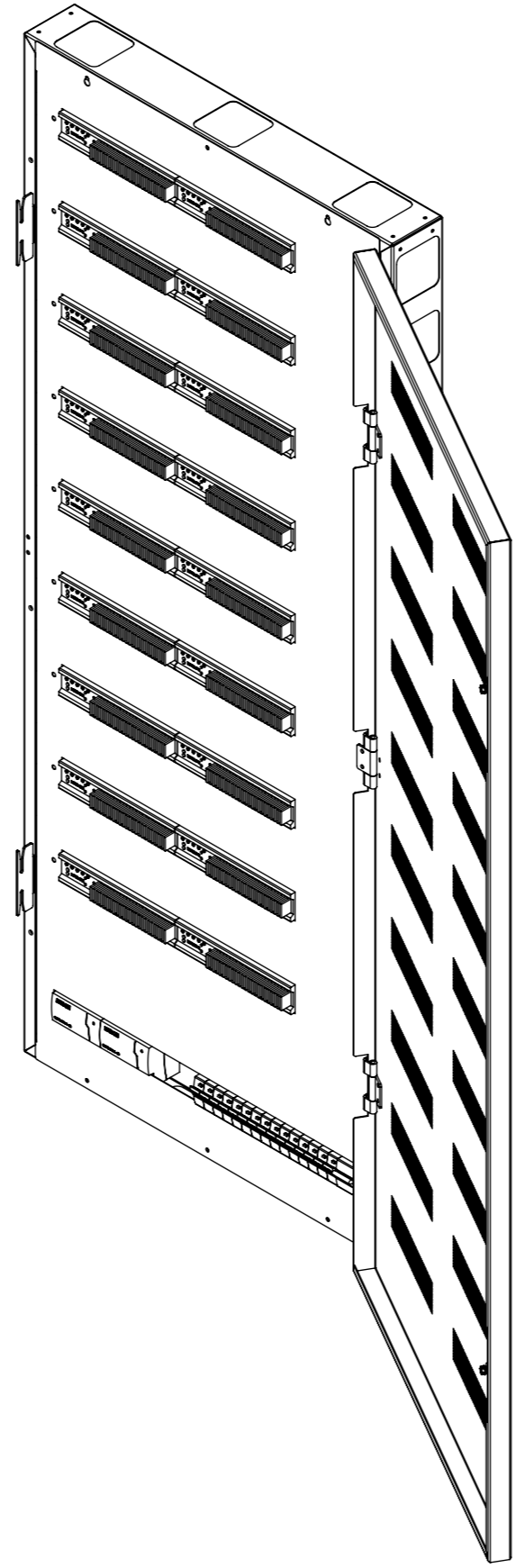


# LCP10

## LUTRON CONTROL PANEL - 10 RAIL



future automation



# LCP10

## LUTRON CONTROL PANEL - 10 RAIL



future automation

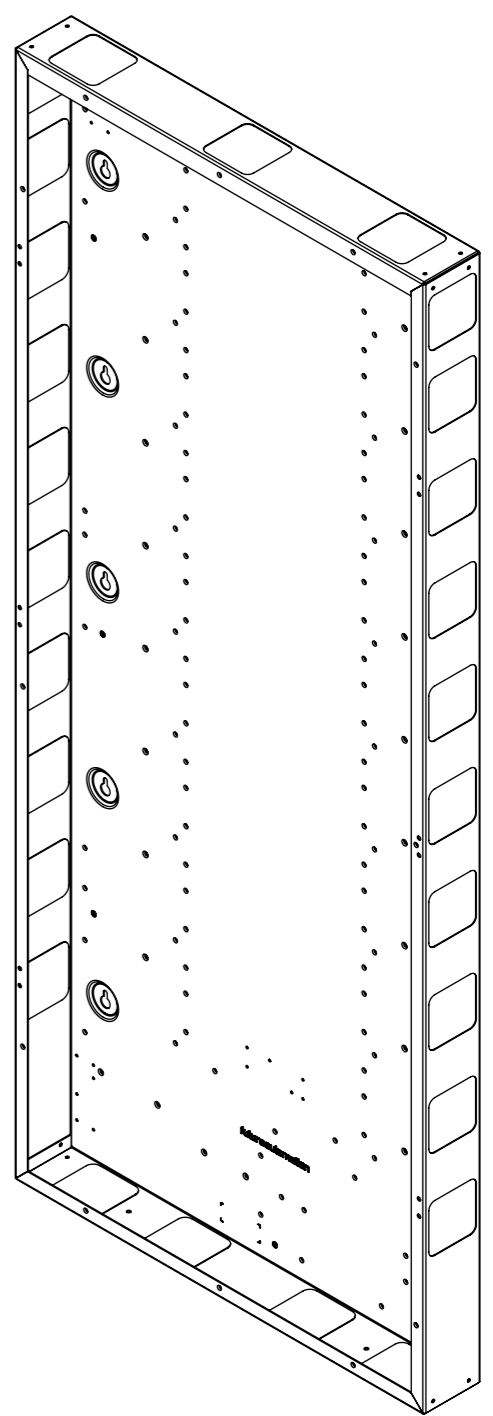
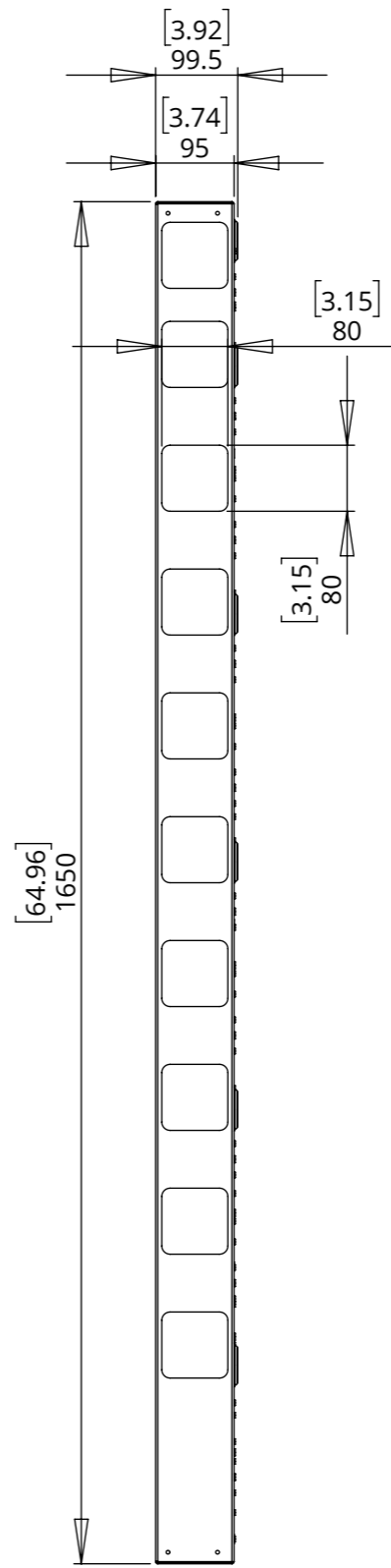
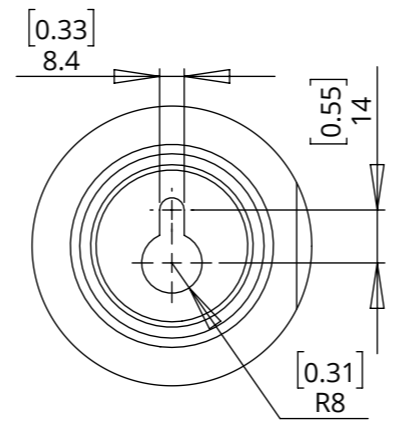
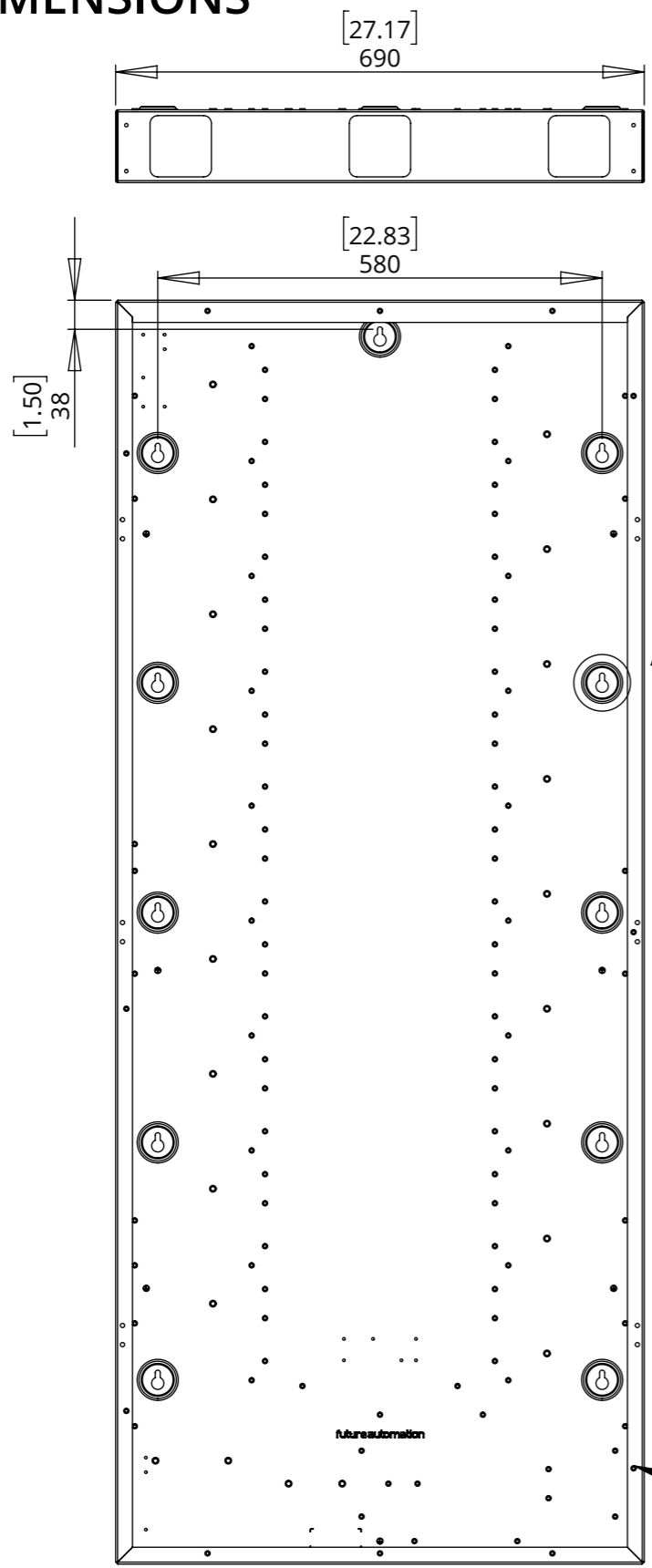
SPECIFICATION	MEASUREMENTS
Product Dimensions	1650mm (64.9") x 690mm (27.2") x 141.5mm (5.6")
Number of DIN Rails	10
Finish (Custom Available)	Lid - Black Textured Paint, Box - Zintec Coated Steel
Maximum Number of Lutron Modules	18
Depth From Wall	141.5mm (5.6")
Wall Mount Type	80mm (3.1") Keyhole Slots
Shipping Dimensions	1760mm (69.2") x 840mm (33.0") x 240 (9.5")
Shipping Weight	40Kg (88lbs)

# LCP10

## LUTRON CONTROL PANEL - 10 RAIL



### ENCLOSURE DIMENSIONS

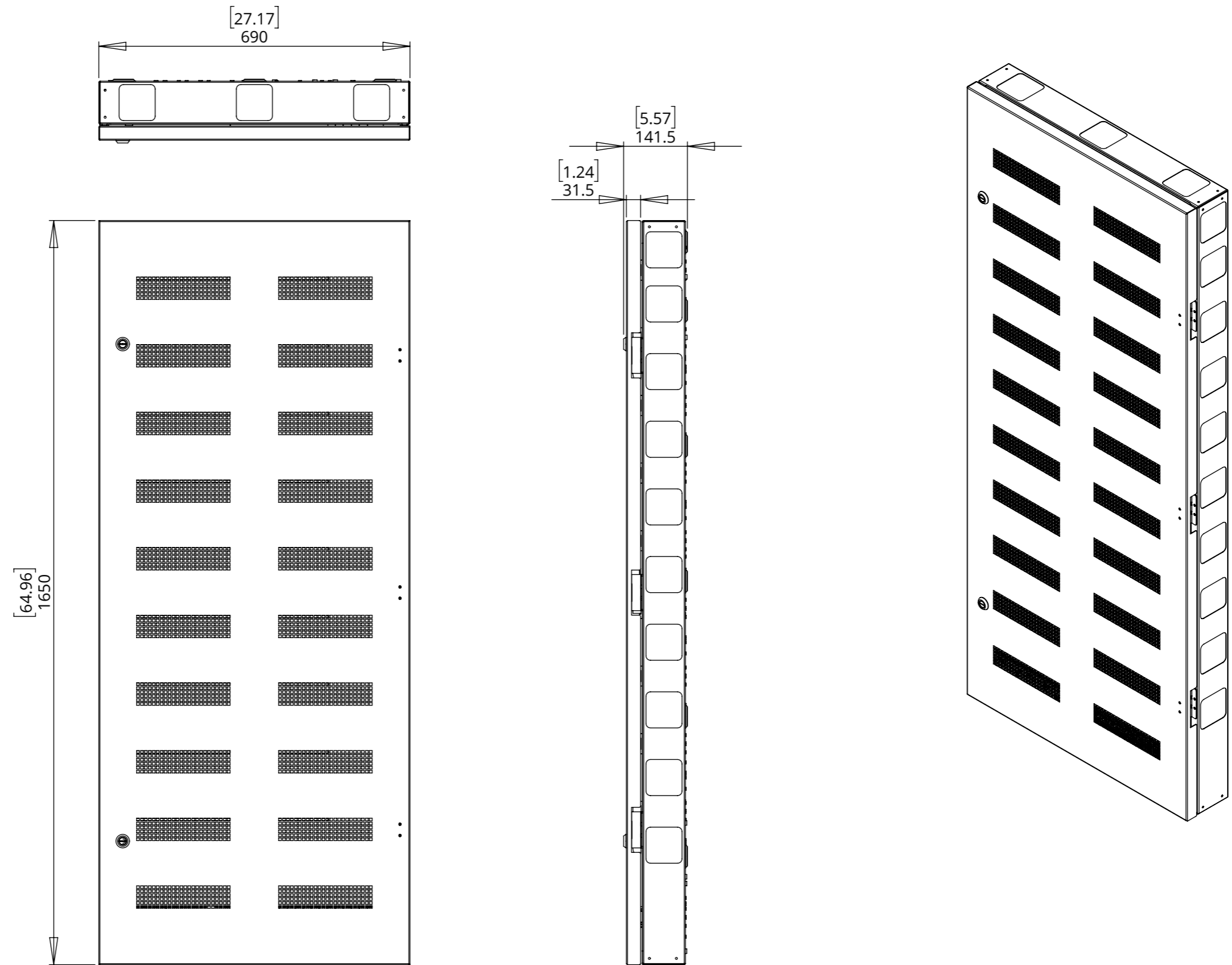


12 X COVER FIXING HOLES

# LCP10

## LUTRON CONTROL PANEL - 10 RAIL

### OVERALL DIMENSIONS



# LCP10

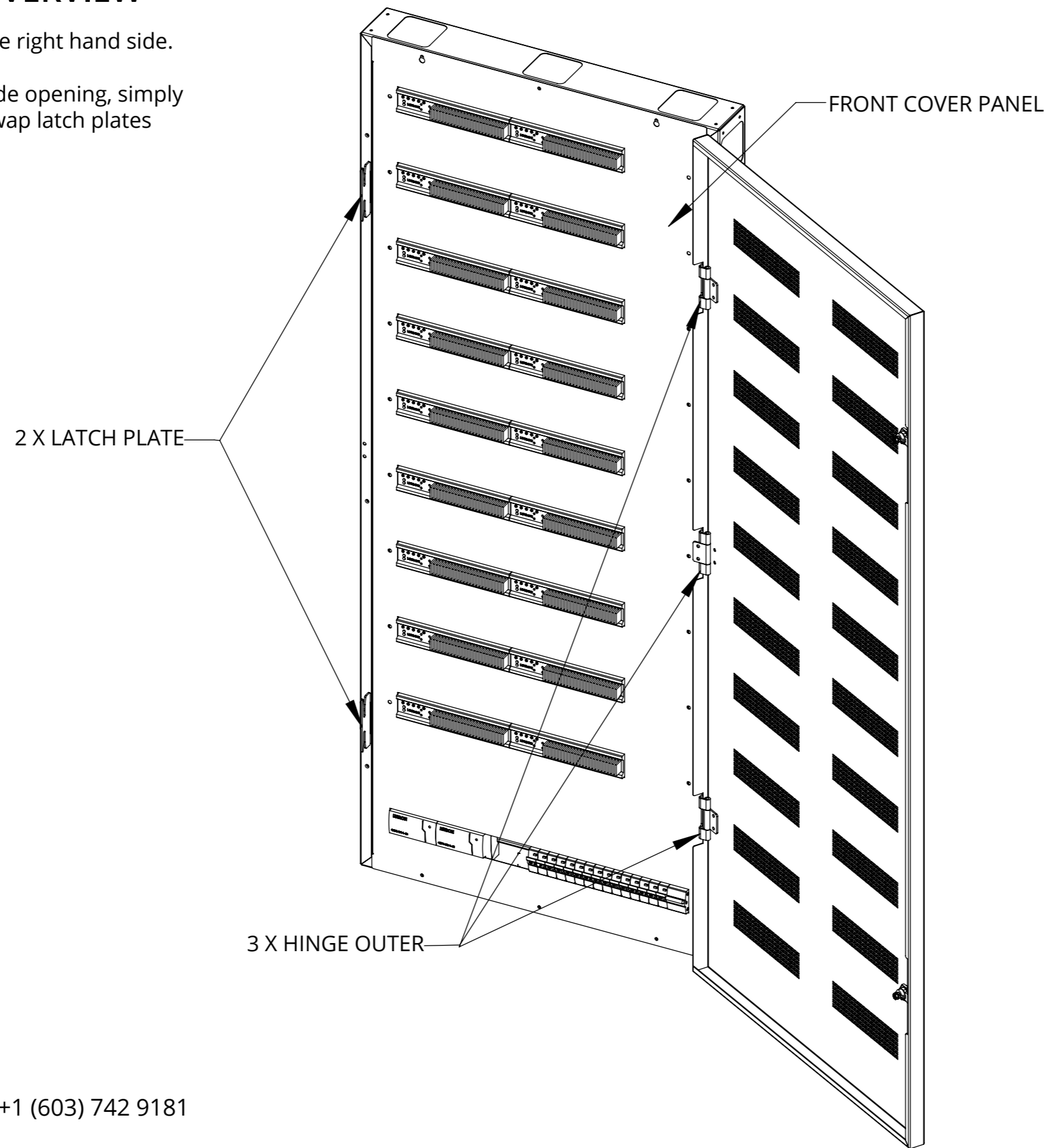
## LUTRON CONTROL PANEL - 10 RAIL



### REVERSIBLE DOOR OVERVIEW

Door shown opening towards the right hand side.

In order to switch to left hand side opening, simply remove front cover panel and swap latch plates and hinge outers over.



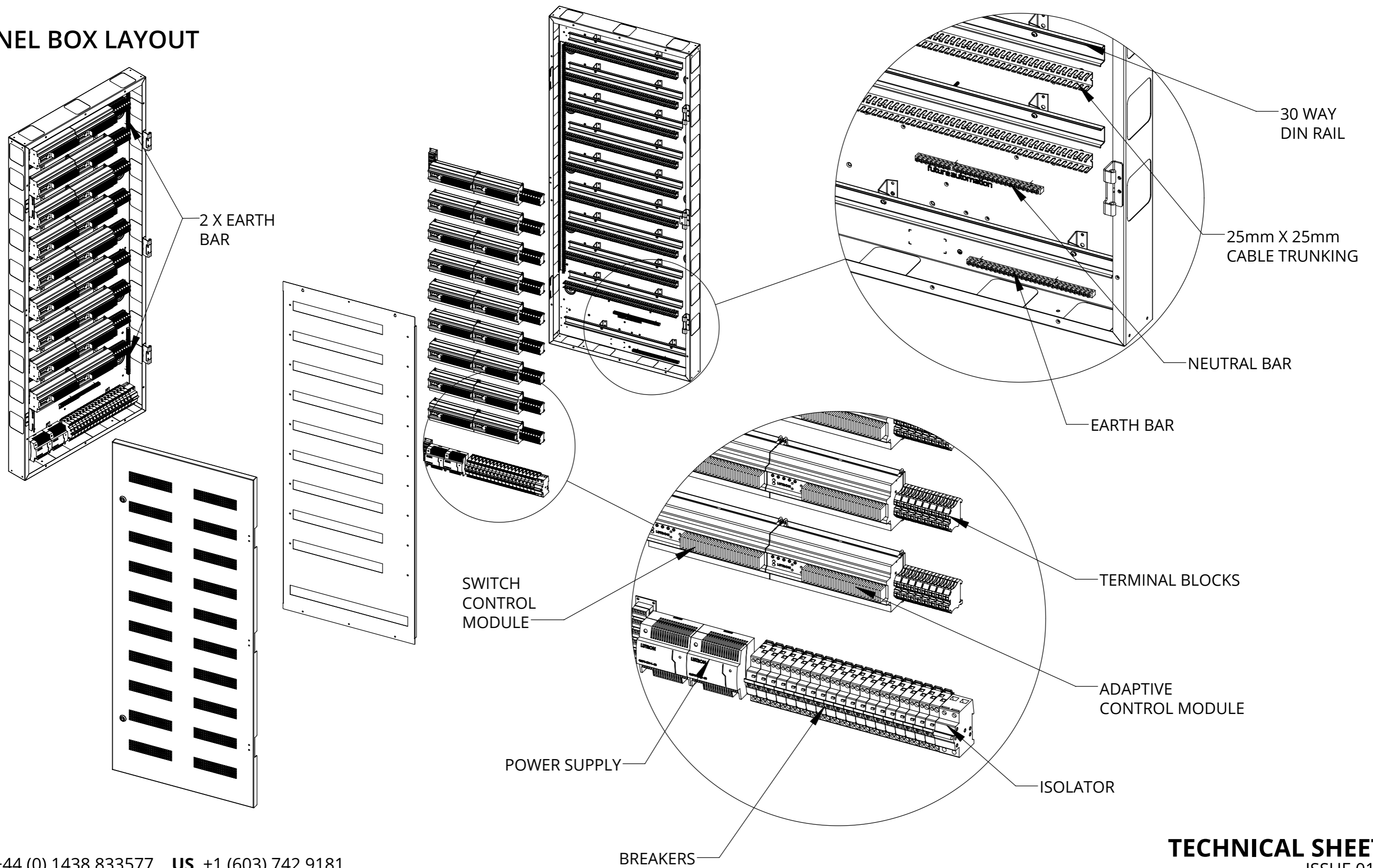
# LCP10

## LUTRON CONTROL PANEL - 10 RAIL



future automation

### PANEL BOX LAYOUT



# LCP10

## LUTRON CONTROL PANEL - 10 RAIL

### PANEL BOX LAYOUT

