

FEELUX

## MonoRail

LED for Display, Cabinet, Furniture & Cove

Display & Cove system for long runs!



## Product Features

- Super Slim liner with power track
- Greatly extends the length of a run with a single power point
- Fixtures snaps onto power track with no breaks in light output
- To be used with constant voltage DC 24V driver
- Dimmable with available accessories

## Specification

- Voltage : DC 24V
- Operating temperature : 0~45° C
- Lamp life : 40,000hr / 70%
- Available color : 2700K, 3000K, 3500K, 4000K, 6000K
- Color rendering : Ra > 85
- Energy efficiency : 75lm/W
- Degree of protection : IP20





## MonoRail

Display & Cove System for Long runs!



MonoRail 1W Length (95mm)



MonoRail 4W Length (286mm)



MonoRail 8W Length (572mm)

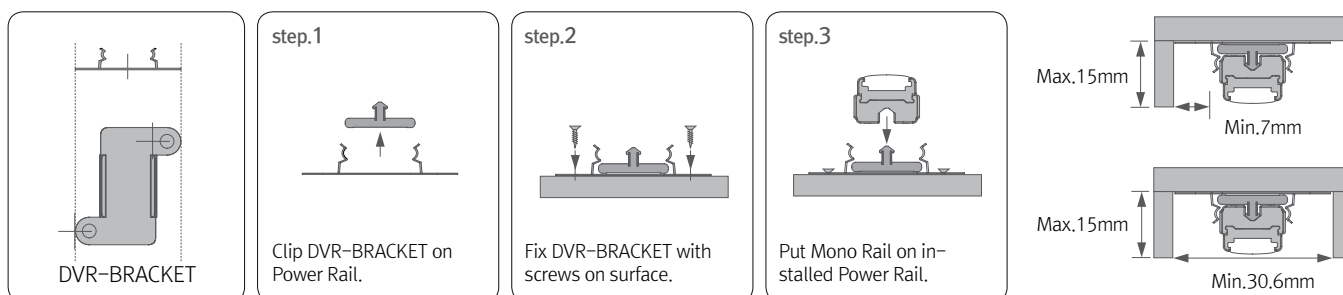


Power Rail (power supply track)

## Easy connection



## Installation

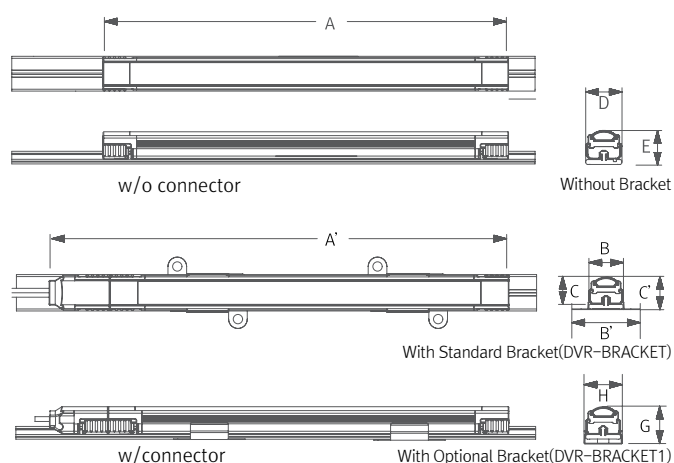


## Max. connection

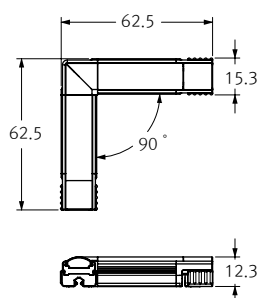
- MonoRail : 180W in one row (Single powerfeed)
- LED Driver

LED Driver Model Name	Max. units for LED Driver	
	24V/75W	24V/180W
DVR1A4B24M	57	138
DVR4A4B24M	18	45
DVR8A4B24M	9	22

## Dimension



\* 90° connector



Model Name	Power Input (V)	Lamp Power (W)	A (mm)	A' (mm)	B (mm)	B' (mm)	C (mm)	C' (mm)	D (mm)	E (mm)	G (mm)	H (mm)
DVR1A4B24M	DC 24	1.3	95	121	15.3	30.6	12.3	14.9	15.6	14.6	17	16.6
DVR4A4B24M	DC 24	4	286	312	15.3	30.6	12.3	14.9	15.6	14.6	17	16.6
DVR8A4B24M	DC 24	8	572	598	15.3	30.6	12.3	14.9	15.6	14.6	17	16.6

## Rail power track– supply power to other electrics



## Accessories

### a Power Rail (Power supply track)

DVR–Rail

### b Power supply cable to the Power Rail

DVRPC : 2500mm

### c Connecting cable between Power Rails

DVRPTC	DVRPTC1	DVRPTC2	DVRPTC4	DVRPTC6
150mm(6inch)	300mm(1feet)	600mm(1feet)	1200mm(4feet)	1800mm(6feet)

### d Connecting cable between Power Rail and Diva2 : DVRPTC–NDV

DVRPTC–NDV1	DVRPTC–NDV2
300mm(1feet)	600mm (2feet)

### e Connecting cable between Power Rail and Diva2 HO&Dual : DVRPTC–HDV

DVRPTC–HDV1	DVRPTC–HDV2
300mm(1feet)	600mm (2feet)

### f Connecting cable between Power Rail and Diva2 Spot : DVRPTC–DVS

DVRPTC–DVS1	DVRPTC–DVS2
300mm(1feet)	600mm (2feet)

### g Sidefeed for seamless extension(1W) : DVR1A4B24M/S

### h 90° connector (DVR1A4B24M/90)

MonoRail90° connector (1W)

### i LED Driver with 6way distributor, with power cord(1800mm)

Part No	FLC75–24V/T	FLC180–24V/T
Capacity	75W 24V	180W 24V

### j Mono rail bracket : DVR–BRACKET (standard)

### k Mono rail bracket : DVR–BRACKET1 (optional)

### l End cap : DVR–CAP

