



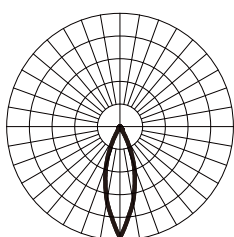


Finish available

Dark Grey	
Matt White	
Matt Black	
Corten	



30° light distribution


Product description

Cubic spotlights with an innovative compact design. Die-casting aluminium for permanent or portable use on a building or in the garden. Mini body with the driver inside. Swivel design allows you to direct the light in the right direction. Luminaires with black ultra-low glare light source, deep-set LED with black reflector and optical lens for excellent visual comfort. The anti-glare shield accessories can help reduce the glaring effect down to an even lower level.

Technical information

Light source: SMD LED Module
 Colour temperature: 3000K, 4000K
 Colour rendering index: CRI > 80
 SDCM: < 5
 Integrated driver: Yes
 Luminaire connected wattage: 6 W
 Voltage: AC220-240V 50/60Hz
 Power factor: > 0.5
 Luminous flux: 550 lm
 Light optics: 30°
 Light distribution: Medium
 Protection class: IP65
 Impact strength: IK 07
 Safety: Class I
 Swivel range: 0°-120°
 Ground spike made of nylon included: Yes
 H2O STOP for capillary action resistant(Optional): Yes
 Factory pre-wired with the connecting cable or plug(Optional): Yes
 Anti-glare shield(Optional): Yes
 Luminaire weight: 0.55 kg

Weatherproof finish: Special process to reinforce the outer layer of aluminium to prevent rust.

H2O STOP: An inaccurate installation of the luminaire with the ineffective connection may lead to water passage along the cable and consequently water ingress in the fitting. "H2O STOP" giving effective protection against water passage along with connecting cables.  [YouTube https://youtu.be/6UDTfAPwx0](https://youtu.be/6UDTfAPwx0)

Anti-glare shield: Cut off the direct glare in the direction of the light source. Totally excluding the blinding effect.

Item No.: K1020
Projectors



Item No.: K1020
Projectors



Impact-resistant Glass



Glare Cut-off Technical Black Reflector



Visual Comfort Optical Lens



Deep-set Hidden Lighting Source



Integrated Driver

Anti-glare Shield Accessories



Weather & Atmospheric Resistant Finish



Impact-resistant Diecasting Housing



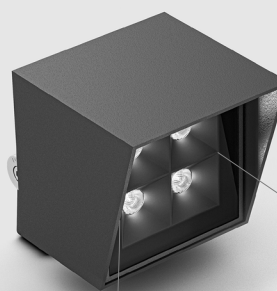
Waterproof IP65



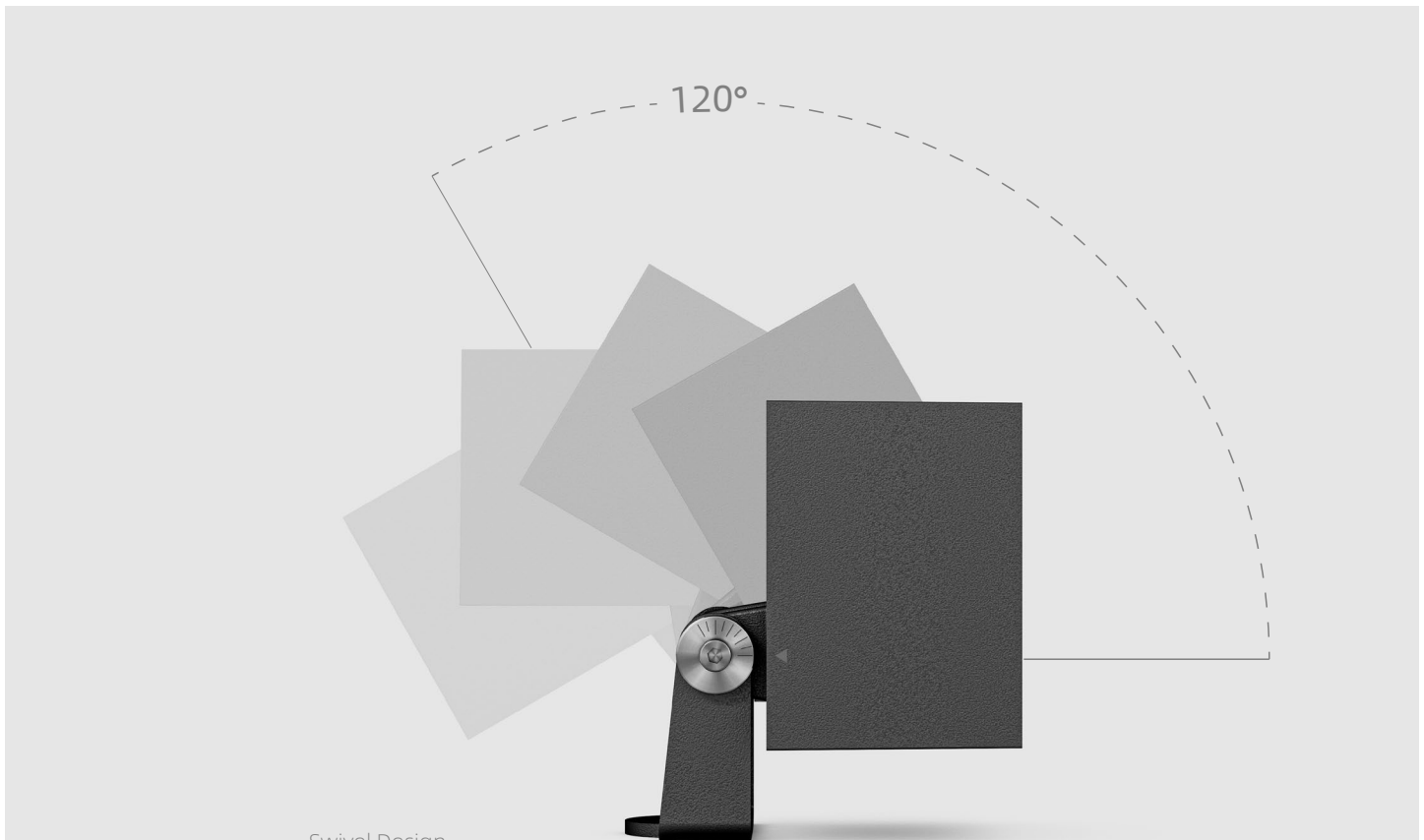
Pressure Sealed Cable Gland



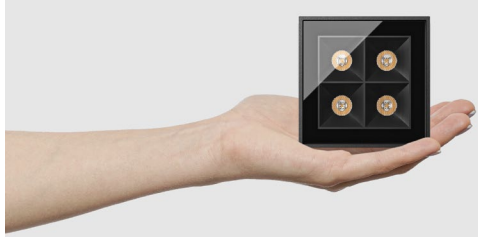
-30°



-30°



Swivel Design



Item No.: K1020
Projectors



Item No.: K1020
Projectors

Accessories



Item No.: A0305

Description: Anti-glare shield



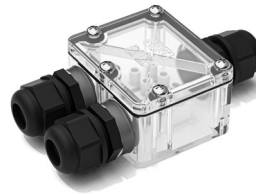
Item No.: A0003

Description: H2O STOP for capillary action resistant



Item No.: A0101

Description: Small ground spike made of nylon



Item No.: A0002

Description: IP67 3 ways connecting box with 3-pole connector