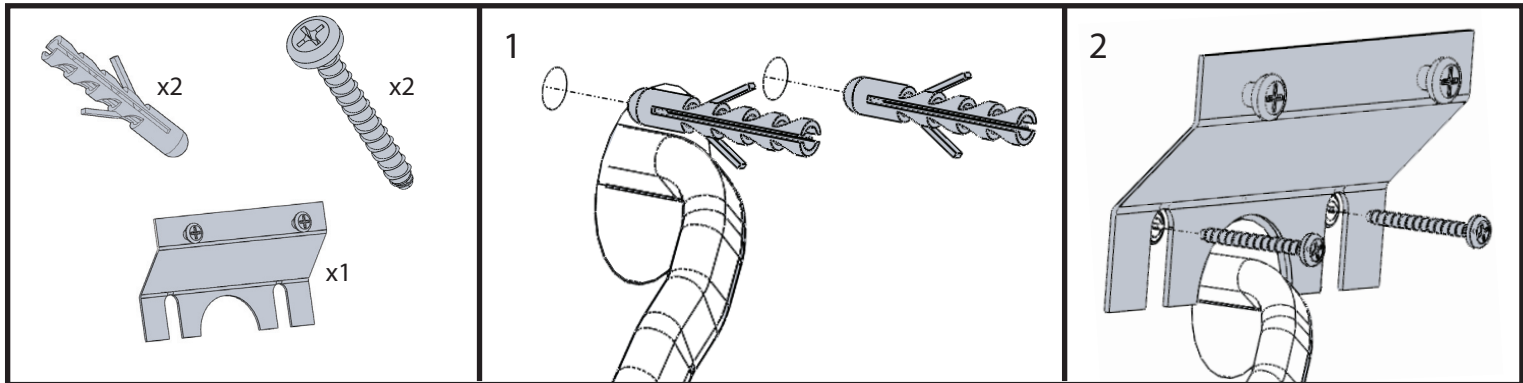


Installation Instructions

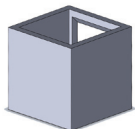
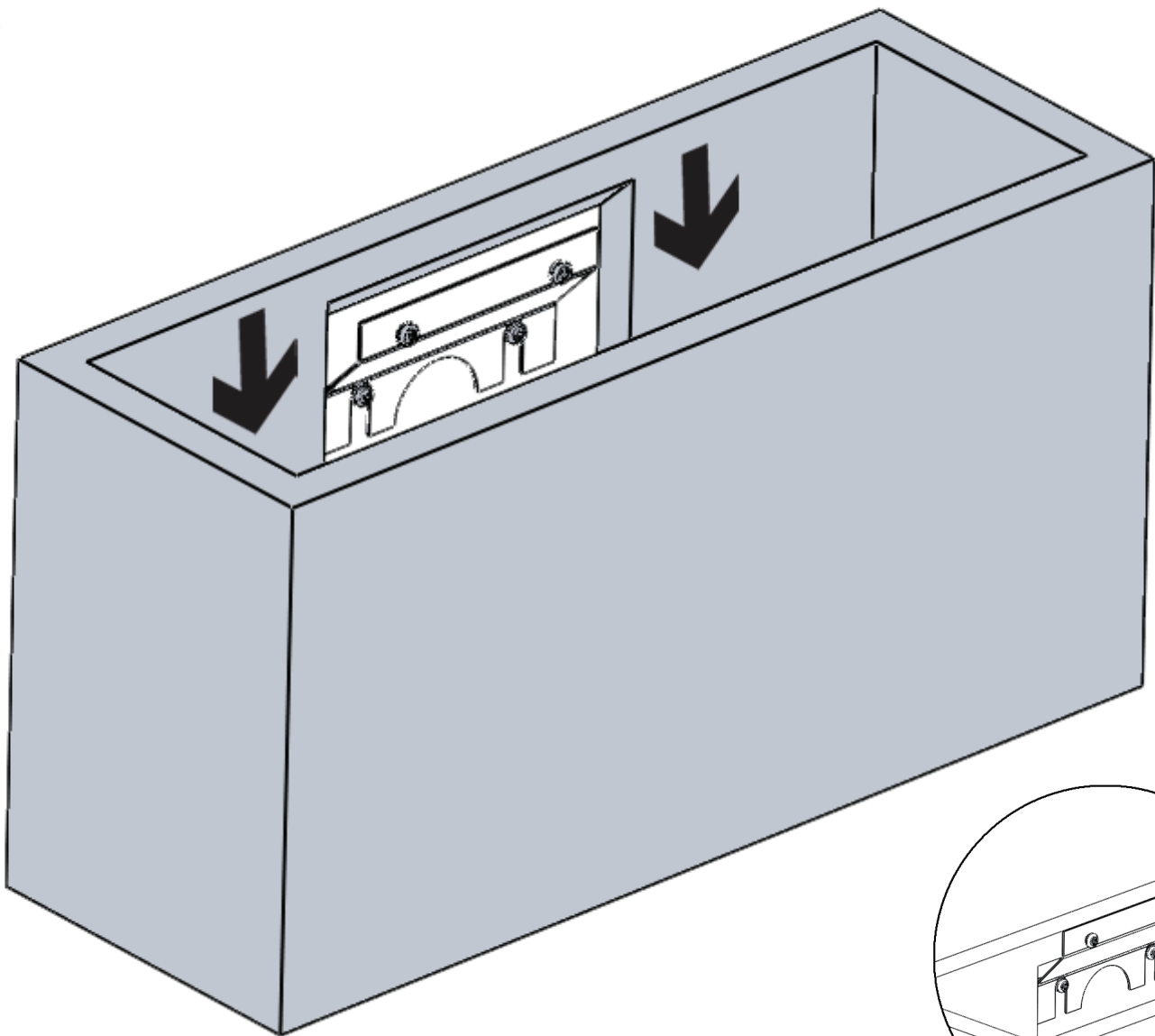
Plaster Linear Wall Lights

Models: TR7280, TR8181, TR8244, TR8280, TR8281, TR9055, TR9455

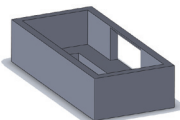
Important: All of our plaster lights can be left unpainted, however if you do decide to paint them, it is necessary to first seal them with a PVA sealer. A solution can be made up by mixing 1 part PVA with 1 part water. Use a brush to apply the sealer, then wait until thoroughly dry before painting. After lights have been painted, please allow 2-3 days before switching on any warm light source such as tungsten halogen.



3



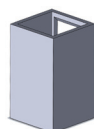
TR8180



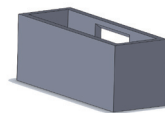
TR9455



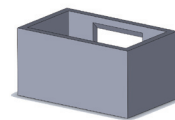
TR7280



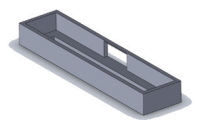
TR8280



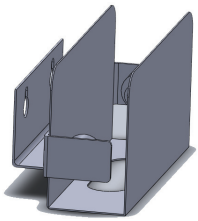
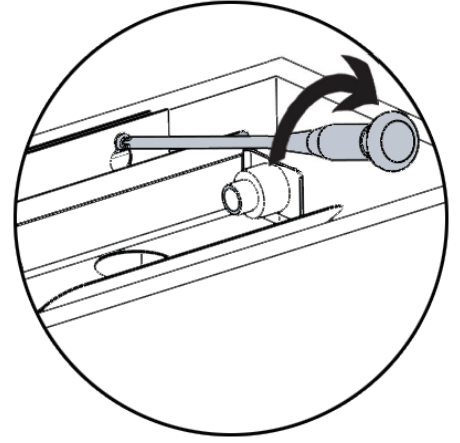
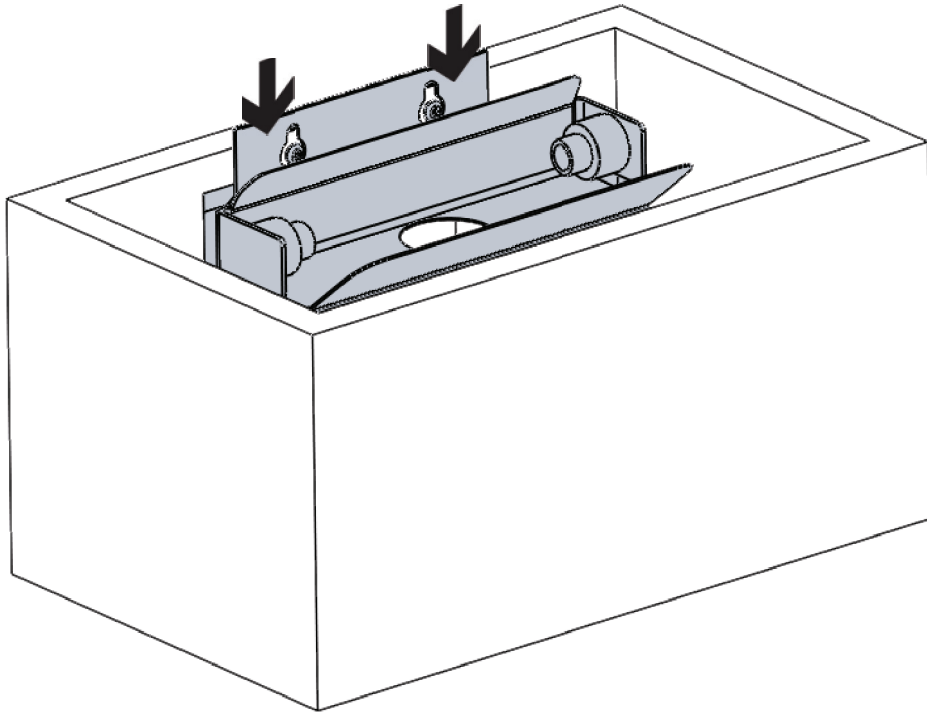
TR8281



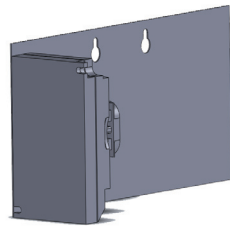
TR8244



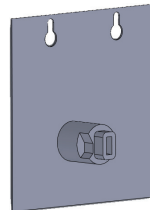
TR9055



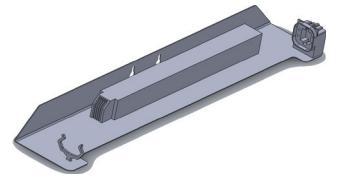
TH
TR8281



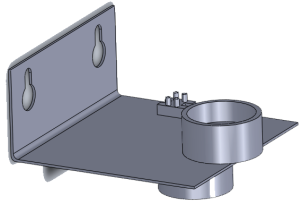
Multi CFL
TR8281



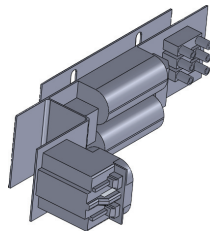
TH
TR8180



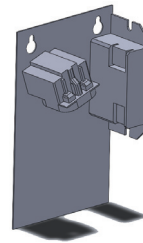
Multi CFL
TR9055



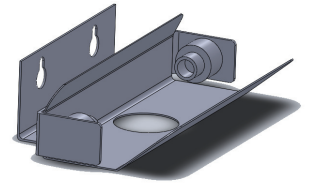
GU10
TR7280
TR8280



Multi CFL
TR8244
TR9455



Multi CFL
TR8280
TR7280



TH
TR9455 TR455
TR8244