



SMART
WIRELESS LIGHTING



FIRESAFE
LED
DOWNLIGHT

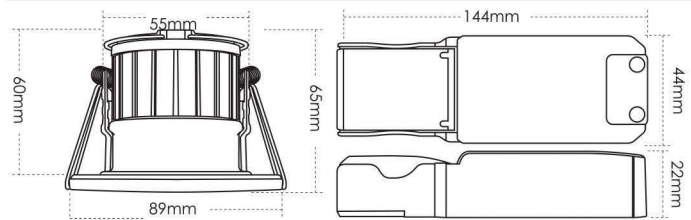


This instruction sheet is relevant to Phoebe LED Smart Firesafe Downlight product code: 12851

THANK YOU for buying this PHOEBE LED product. To help ensure this luminaire gives complete satisfaction please only use it according to the following instructions, and then pass the instructions to the appropriate person for retention and future reference.

Warning

1. Installation only to be carried out by a qualified electrician
2. Please ensure surface is suitable and capable of holding the luminaire and driver weight
3. Pre-cut hole before installation, (see below chart for hole diameter)
4. Do not operate if product is damaged
5. IP65 rated front with bezel, suitable for bathroom zones 1 & 2, IP20 rear suitable for indoors
6. This product is suitable for fire rated installations, Part L Compliant of UK Building Regulations, Part B Compliant BS476 Parts 21 and 22 – Suitable for 30 minute 600mm/15mm single layer Standard Wallboard, 60 minute 600mm/12.5mm twin layer Fireboard and 90 minute 450mm/15mm twin layer Fireboard ceilings



| Product code | Power (W) | Colour Temp (K) | Cutout Ø |
|--------------|-----------|-----------------|----------|
| 12851 | 8.5 | 2700K-6500K | 70-72 |

1

- a. Switch off power
- b. Prepare cut-out hole in your surface to specified dimensions as stated in above table.

c. Flip open the driver end cover to reveal push fit loop in/loop out terminal.

2

- a. Connect the driver to mains electricity in accordance with current wiring regulations.
- b. Flip driver end cover to closed position and push down firmly to lock wire in place.
- c. Insert driver in-situ within the recess ensuring the pre-wired male connector is accessible.

3

Connect the male push fit connecting cable from the driver (i) to the female connecting cable attached to the luminaire (ii).

4

- a. Push the spacer loops (i) into the vertical position, to ensure minimum safe spacing.
- b. Push back the spring clips (ii) and insert luminaire into recess (iii).

5

Ensure luminaire is a flush fit and has plenty of ventilation.

6

Switch power on at circuit.

NB. For high voltage circuit insulation testing disconnect mains input supply first. (Do not circuit test using a Megger)

Environmental Protection

Waste electrical products should not be disposed of with household waste. Please recycle where facilities exist. Check with your Local Authority or retailer for recycling advice.

7

For Tuya application setup see overleaf.

For further advice on using your new smart lights with your home hub please consult your home hubs guide to using Tuya Smart devices.

SMART WIRELESS LIGHTING

Crompton LAMPS

See the full range at www.cromptonlamps.com

LED Candle Smart Lighting

| Code | Watts | Lumens | Colour | Cap |
|-------|-------|--------|-----------|-----|
| 12349 | 5W | 470m | 3000K | BC |
| 12356 | 5W | 470m | 3000K | SES |
| 12363 | 5W | 470m | RGB+3000K | BC |
| 12370 | 5W | 470m | RGB+3000K | SES |

LED GLS Smart Lighting

| Code | Watts | Lumens | Colour | Cap |
|-------|-------|--------|-----------|-----|
| 12301 | 8.5W | 806lm | 3000K | BC |
| 12318 | 8.5W | 806lm | 3000K | ES |
| 12325 | 8.5W | 806lm | RGB+3000K | BC |
| 12332 | 8.5W | 806lm | RGB+3000K | ES |

LED GU10 Smart Lighting

| Code | Watts | Lumens | Colour |
|-------|-------|--------|-------------|
| 12387 | 5W | 320m | 2700K-4000K |
| 12394 | 5W | 320m | RGB+3000K |
| 12400 | 5W | 320m | RGB+4000K |

LED Flexi-Strip Smart Lighting

| Code | Watts | Lumens | Colour |
|-------|-------|--------|-------------------|
| 12417 | 18W | 1500lm | RGB+Tunable White |

Images are for information only. Phoebe LED shall not be held liable for improper operation of the luminaire in circumstances where procedures and specifications have not been followed correctly. Crompton Lamps Limited 2019

Tel: +44 (0)1274 657 088 Fax: +44 (0)1274 657 087 Web: www.cromptonlamps.com



Tuya setup guide for Crompton/Phoebe Smart Range

The following is intended as a guide to setting up and using the Tuya application with Crompton Smart range lamps, the process/screen images may differ depending on your app version.

Download the **Tuya Smart** app

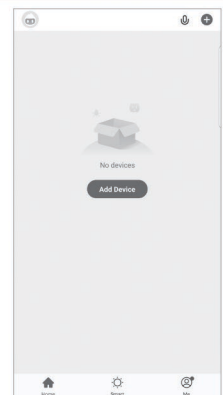
GET IT ON **Google Play**

Download on the **App Store**

Connect your smart device to a 2.4Ghz Wifi Network



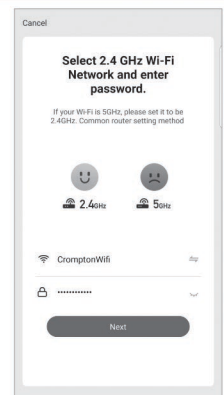
Launch the **Tuya Smart** app and follow the first time setup instructions to create/login to your Tuya account.



- Press + to add devices
- Press Add Device



- Select **Lighting Devices** and SELECT Lighting (Wifi) icon

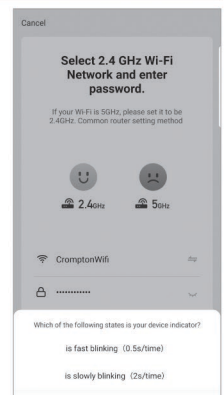


- Select **WiFi** network and enter password, press next

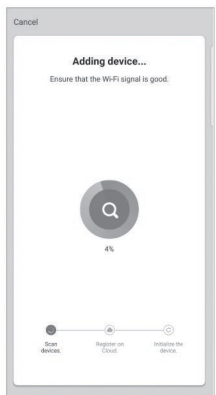
Place your smart lights into **Discovery Mode**

ON 4 Seconds then OFF Repeat X3

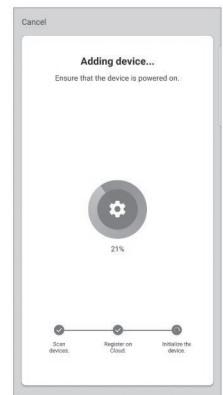
After a few seconds the lights should now **flash** rapidly to indicate discovery mode is on



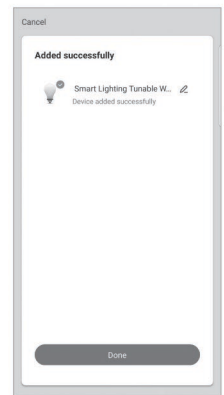
- Confirm light(s) are in discovery mode (fast or slow blinking)



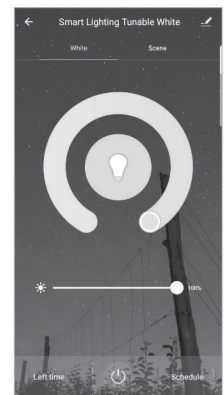
- Tuya app will now add your device(s)
- When the flashing stops the device has been discovered.



- Tuya app will now add your device(s) to your account (Cloud) and Initialize



- Your device(s) are now ready to use, press done.



- With the icon you can now rename your device(s) share the device to other users add the device location to a room, group devices together and more.



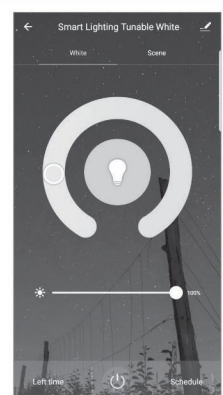
- Dimming is controlled via the bottom slider.



- Colour Temperature is controlled by dragging the circle around the arc.



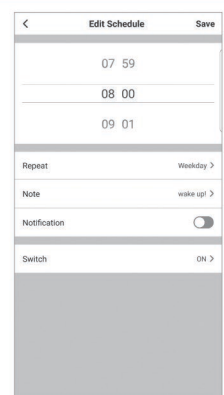
- To turn the device on/off use the power button at the bottom of the screen.



- When powered on, the device will resume in the last state set i.e. dimming level and colour temperature will be remembered.



- Use the scene to save default values, pre-set schemes can be edited.



- Use the Schedule to set timers for your device. (For example turning the light on automatically at 8am weekdays as an alarm).

Voice control:

Google Home

Amazon Echo

Select the icon for one of your devices, under Third-party Control select Alexa or Google assistant and link to your home hubs relevant account.

Home Hub

For further advice on using your new smart lights with your home hub please consult your home hubs guide to using Tuya Smart devices.

Images are for information only. Phoebe LED shall not be held liable for improper operation of the luminaire in circumstances where procedures and specifications have not been followed correctly. Crompton Lamps Limited 2019