

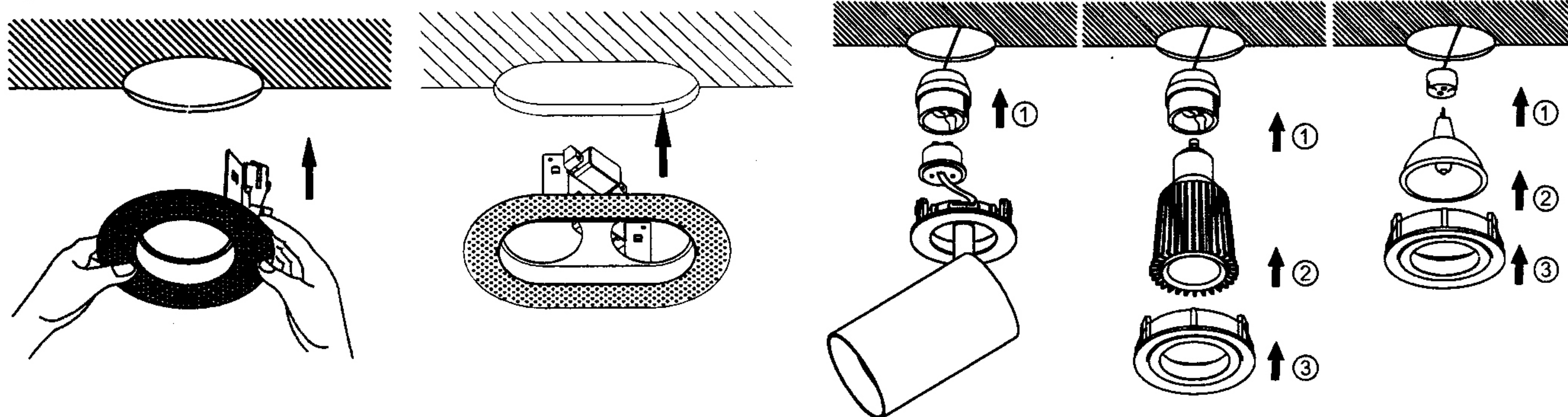
INSTALLATION INSTRUCTION

- 1.The fixture is for GX10, GU10 and MR16.
- 2.Before installation, make sure that the power supply is off.
- 3.Follow the steps as down below for installation or replacement of bulb.
- 4.After finishing every step, tighten the screws, have the fixture fixed, then connect the power supply.
- 5.It is recommended that these products are installed by a qualified electrician.

FRT50

Assembling diagram:

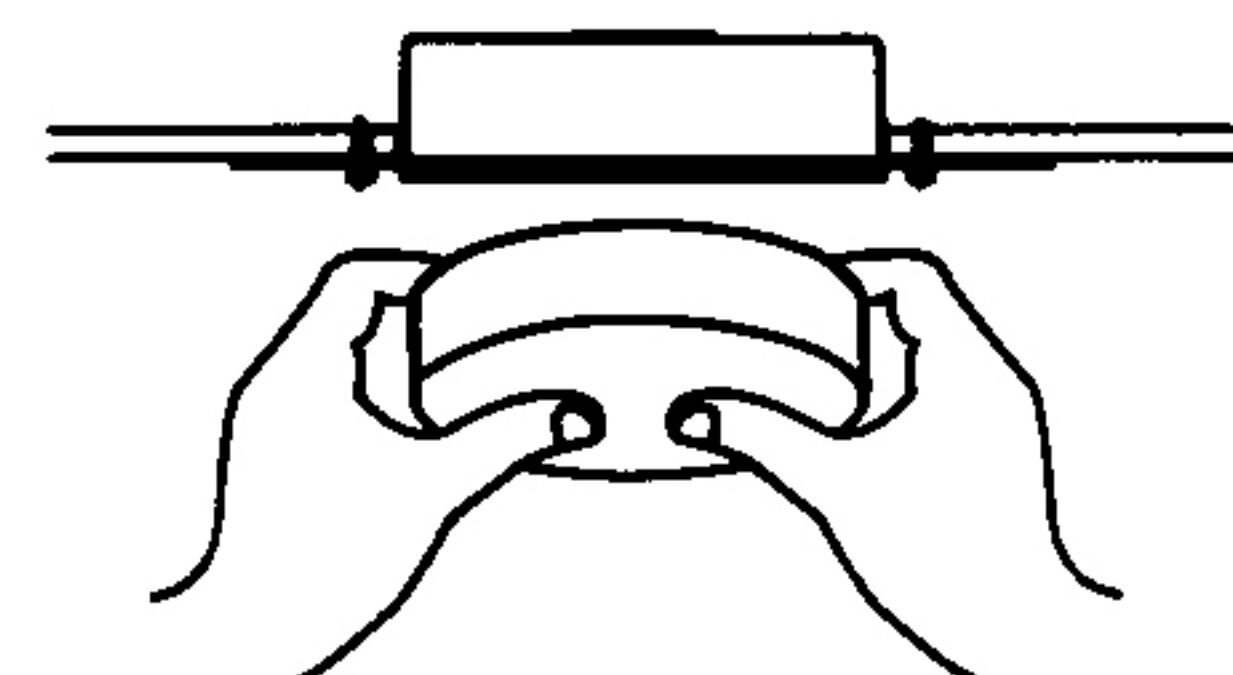
A



B

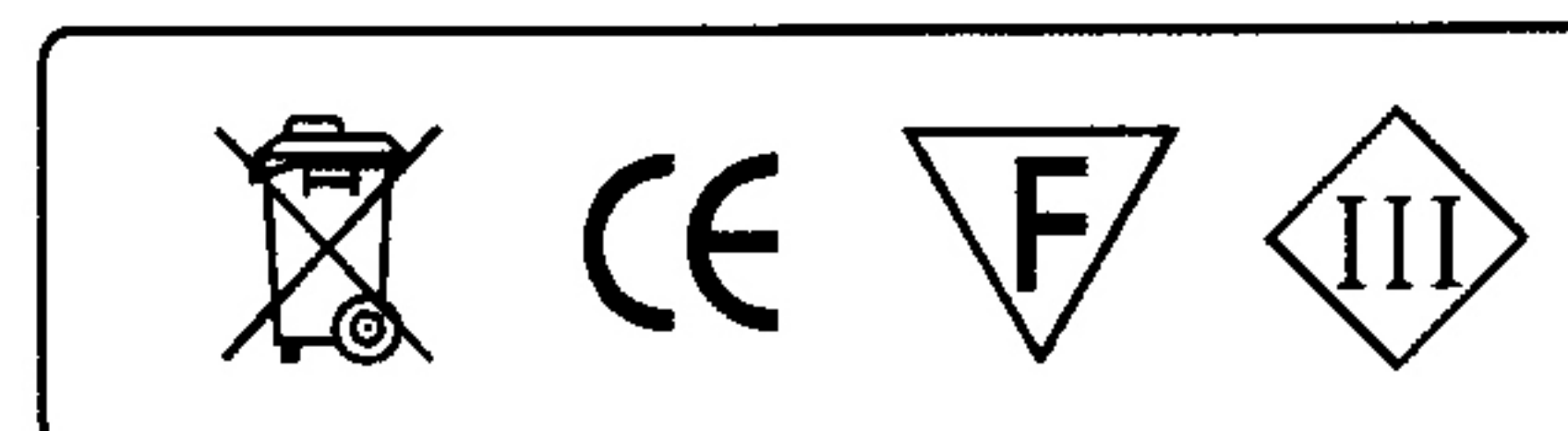
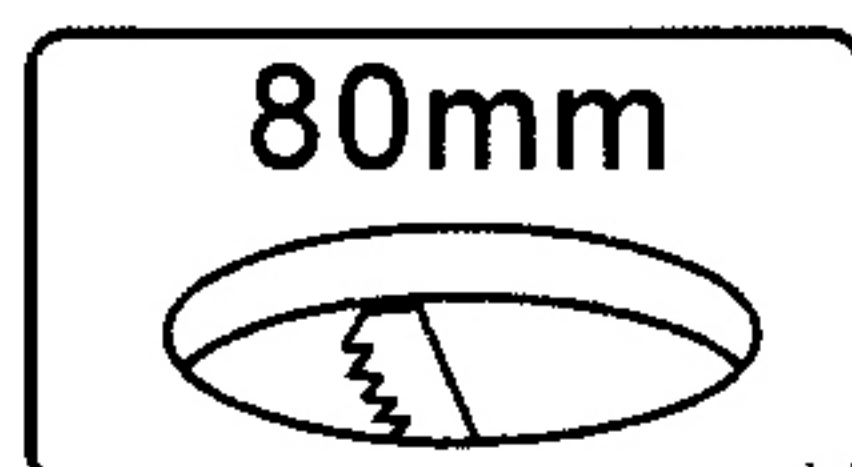
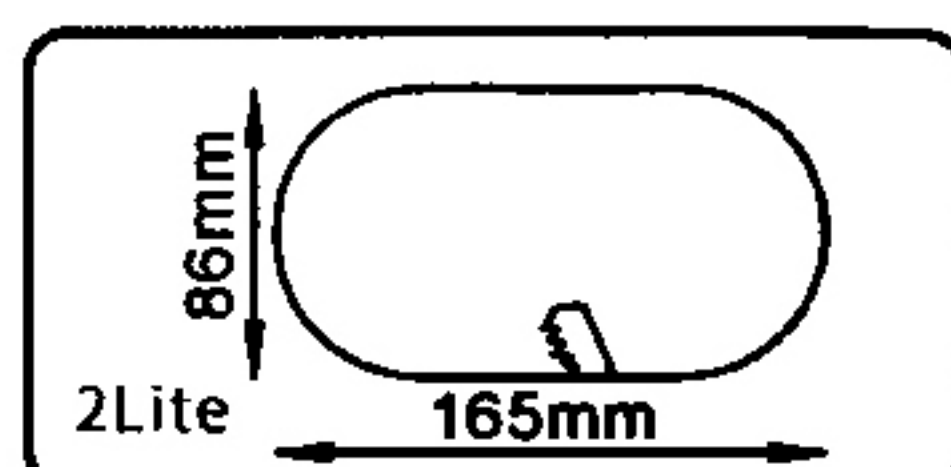
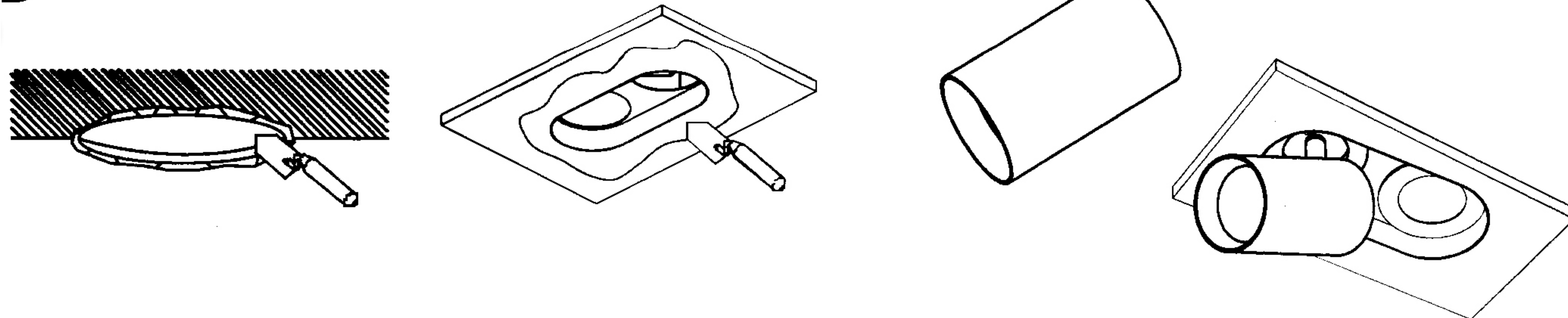


C



WARNING: POLYSTYRENE MUST BE FITTED
INSIDE THE FITTING BEFORE PLASTERING
TO AVOID ANY DAMAGES TO THE INNER RING.

D



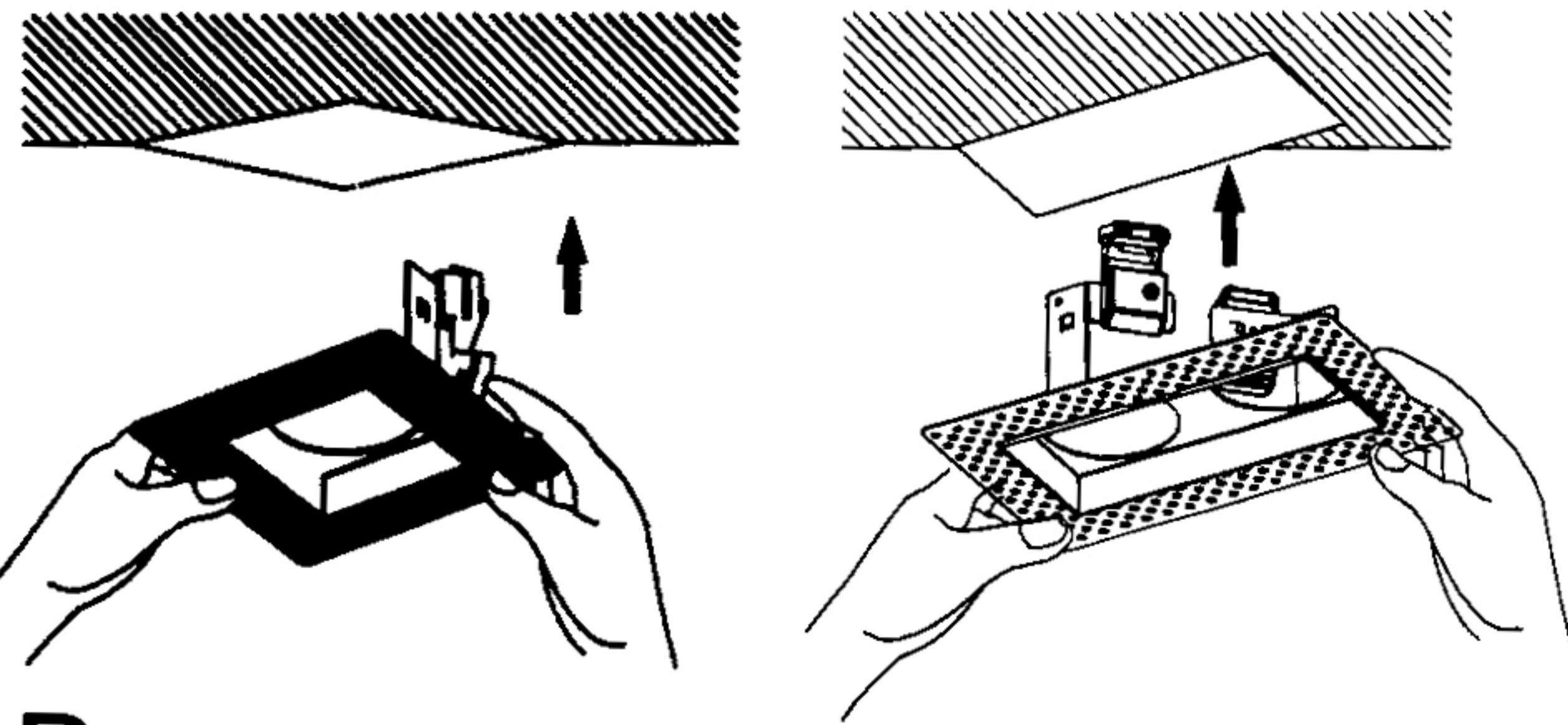
INSTALLATION INSTRUCTION

- 1.The fixture is for GX10, GU10 and MR16.
- 2.Before installation, make sure that the power supply is off.
- 3.Follow the steps as down below for installation or replacement of bulb.
- 4.After finishing every step, tighten the screws, have the fixture fixed, then connect the power supply.
- 5.It is recommended that these products are installed by a qualified electrician.

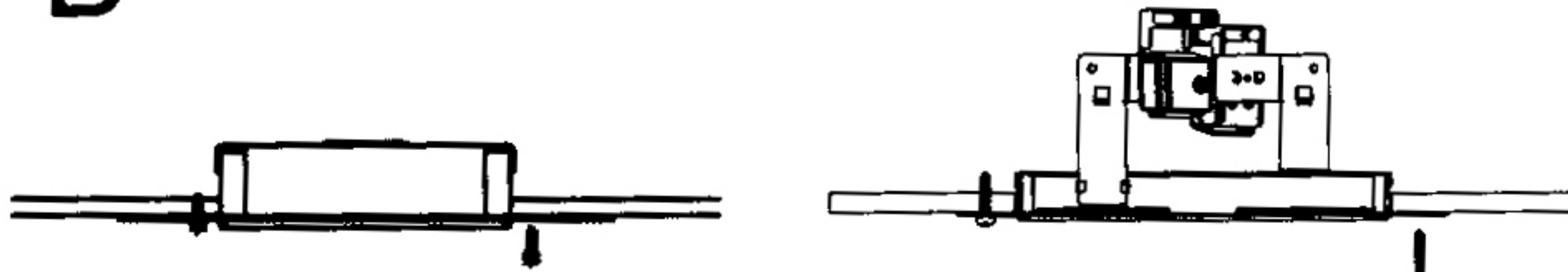
FRT50

Assembling diagram:

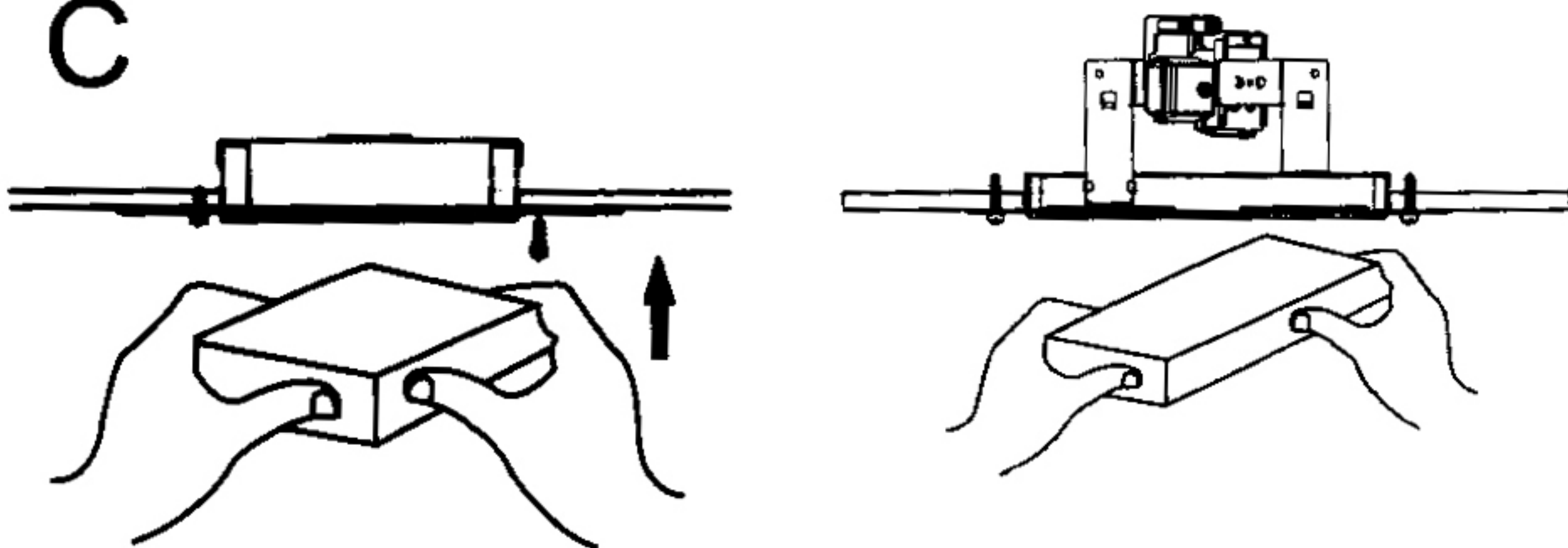
A



B

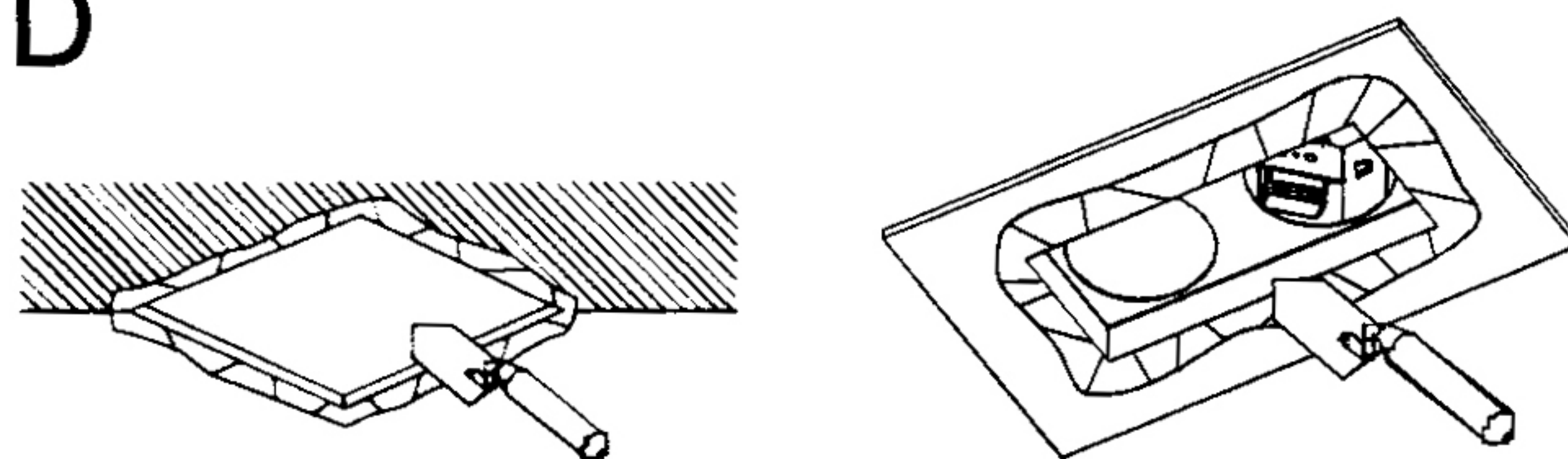


C

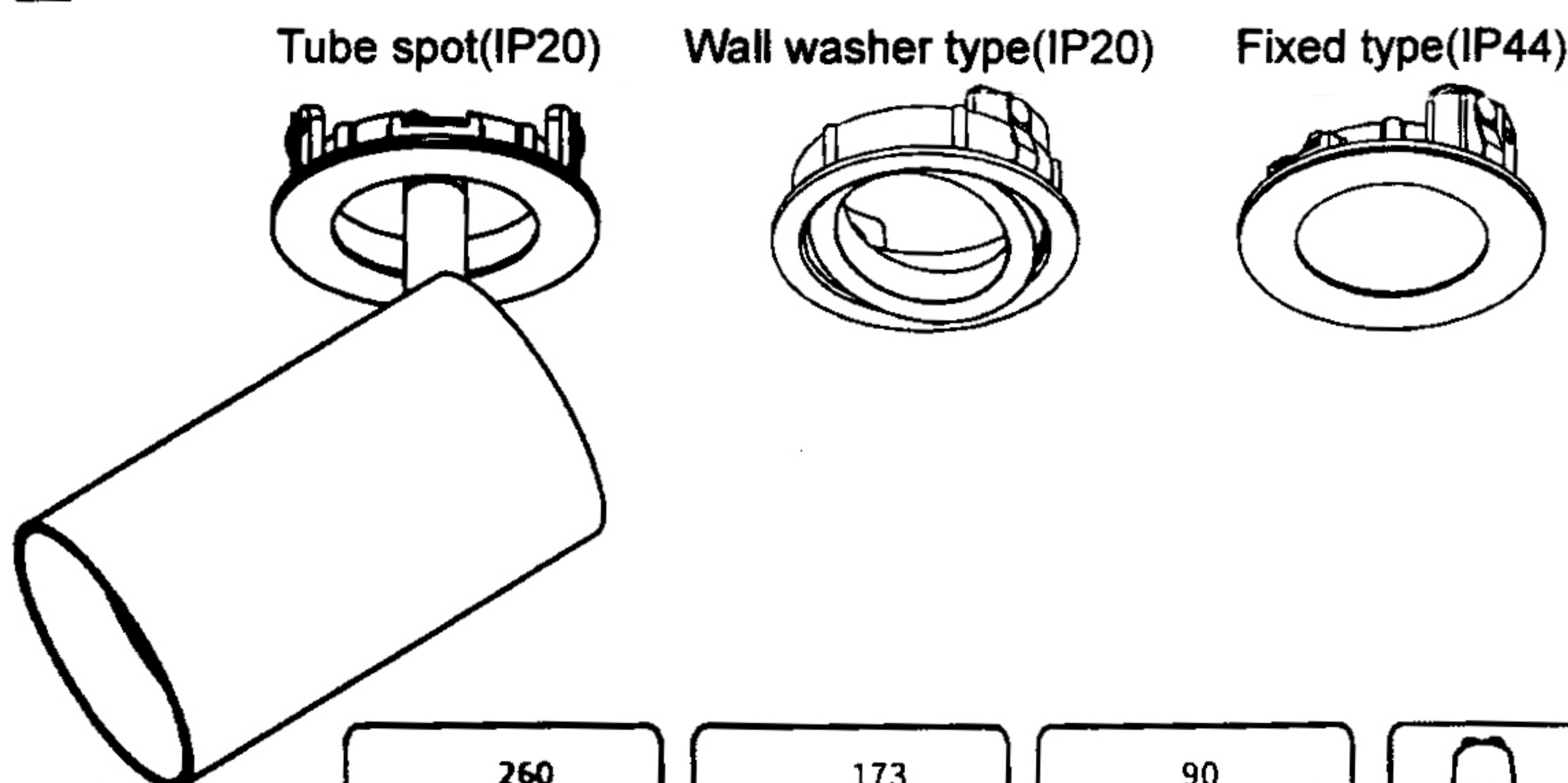


WARNING: POLYSTYRENE MUST BE FITTED INSIDE THE FITTING BEFORE PLASTERING TO AVOID ANY DAMAGES TO THE INNER RING.

D



E



F

